

Processor Interfaces (Caller and Called are IMS Subscribers)

Calling UE	IMS Network			Called UE	EventStudio System Designer 4.0
Caller User Equipment	Visited IMS 1	Home IMS 1	Home IMS 2	Called User Equipment	15-Dec-07 07:55 (Page 1)

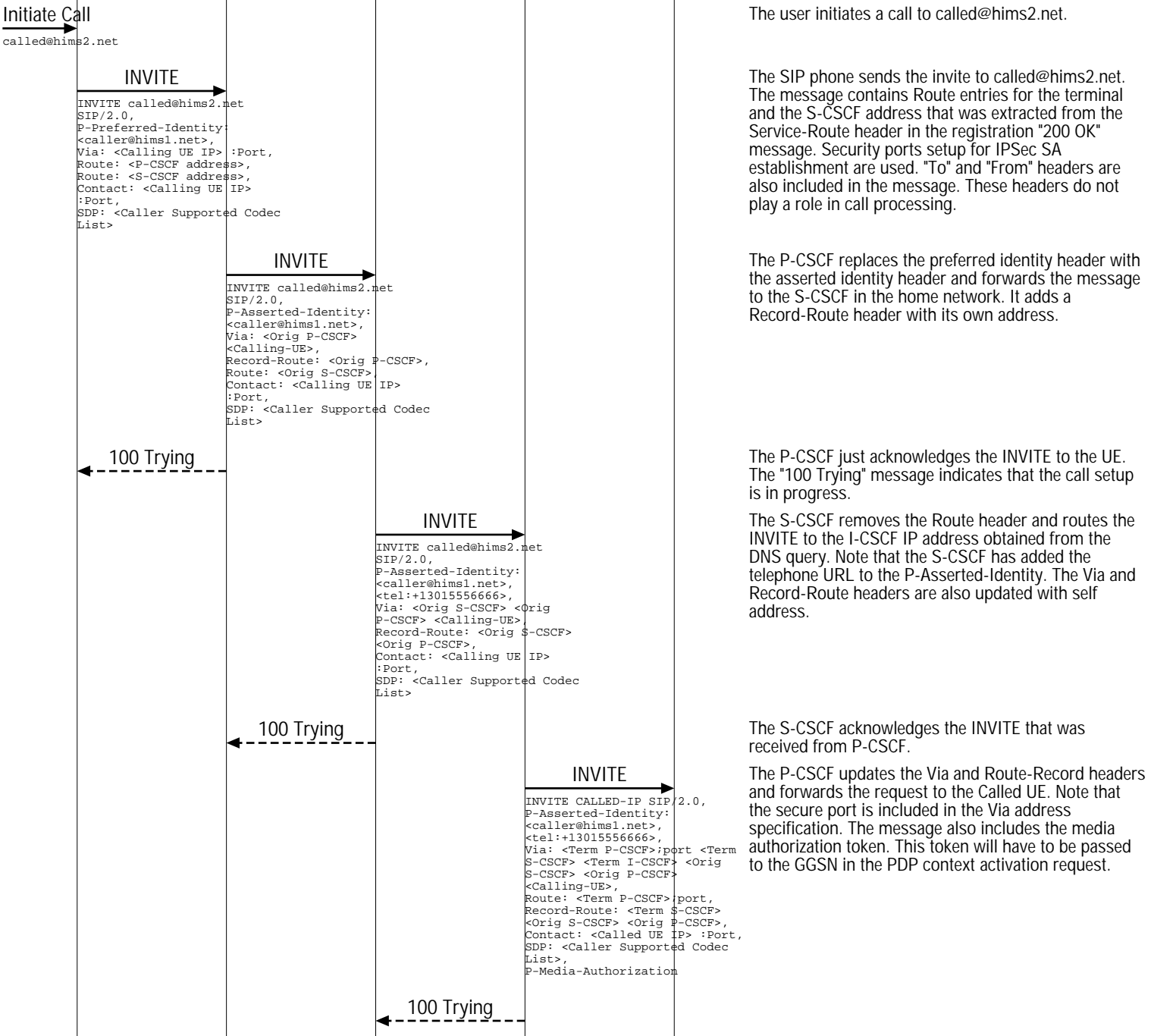
This sequence diagram describes the call setup of a call from one IMS subscriber to another IMS subscriber. The calling subscriber is roaming in another IMS supporting network. The called subscriber is in the home IMS network.

The call flow focuses on the IMS routing of SIP dialog. The major steps in the call flow are:

- (1) IMS Routing of Initial SIP INVITE.
- (2) IMS Routing of First Response to the SIP Invite.
- (3) PDP Context Activation and Audio/Video Path Setup.

This sequence diagram was generated with EventStudio System Designer 4.0 (<http://www.EventHelix.com/EventStudio>). Copyright © 2007 EventHelix.com Inc. All Rights Reserved.

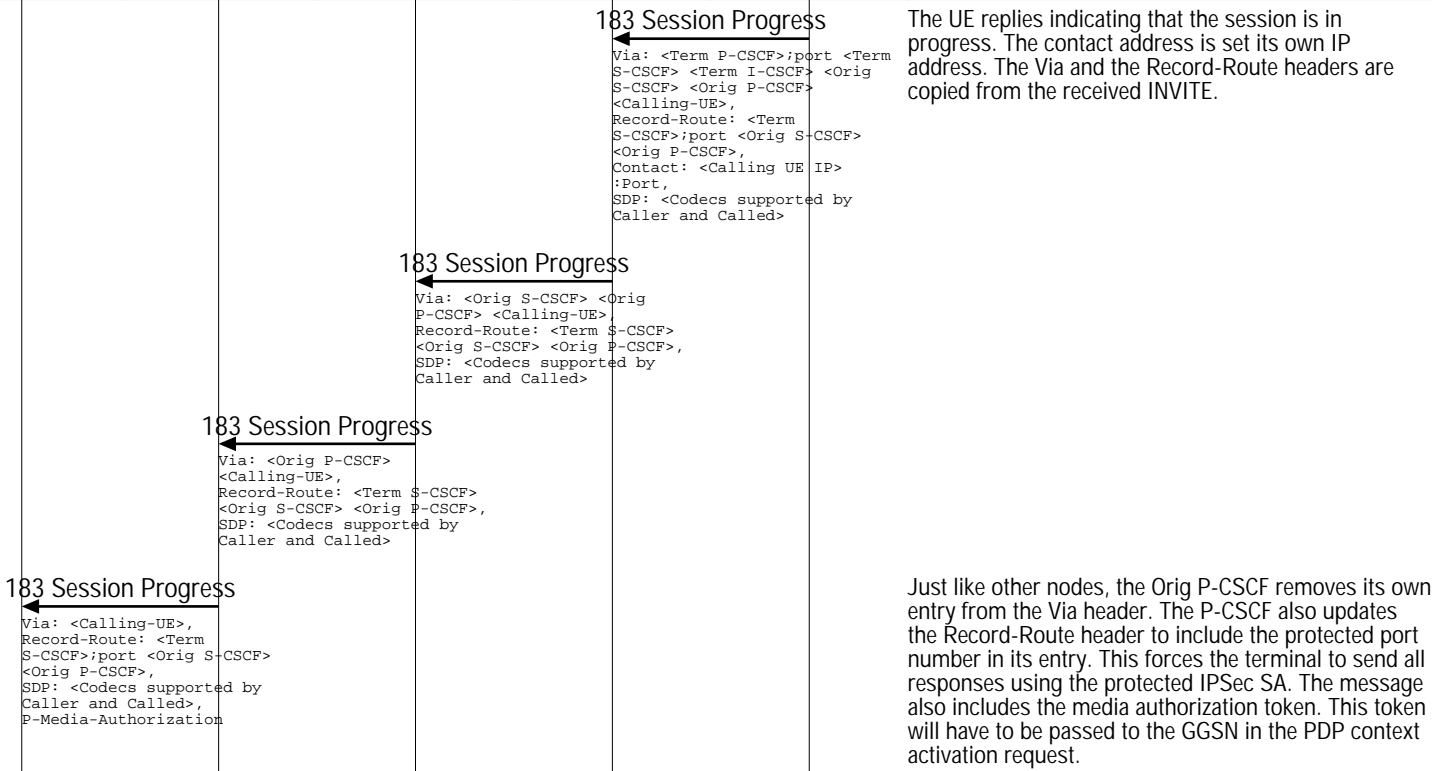
IMS Routing of Initial SIP INVITE



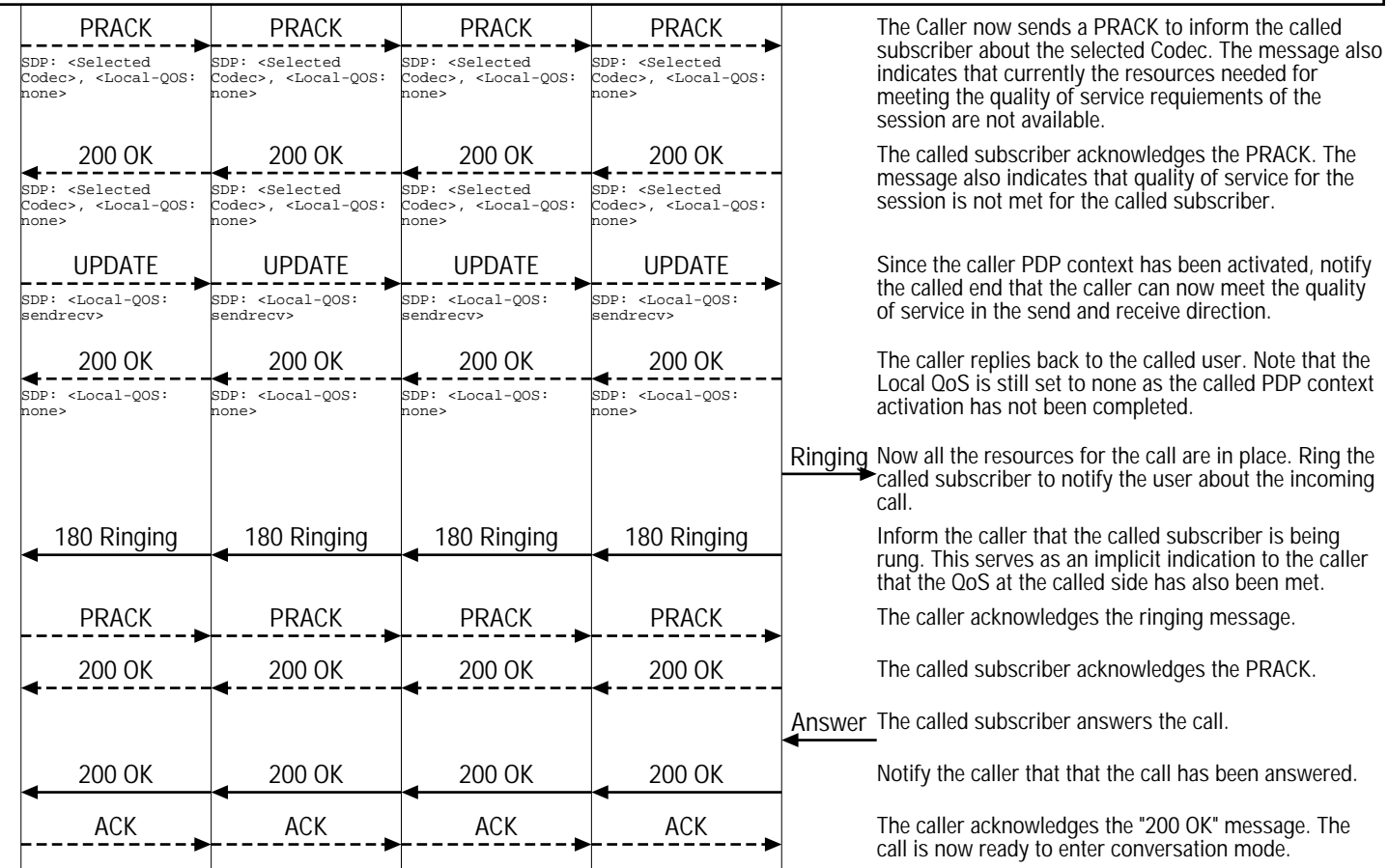
IMS Routing of First Response to the SIP Invite

Processor Interfaces (Caller and Called are IMS Subscribers)

Calling UE	IMS Network			Called UE	EventStudio System Designer 4.0
Caller User Equipment	Visited IMS 1	Home IMS 1	Home IMS 2	Called User Equipment	15-Dec-07 07:55 (Page 2)



PDP Context Activation and Audio/Video Path Setup



Conversation on a direct RTP/RTCP connection between the caller and called subscriber SIP phones.