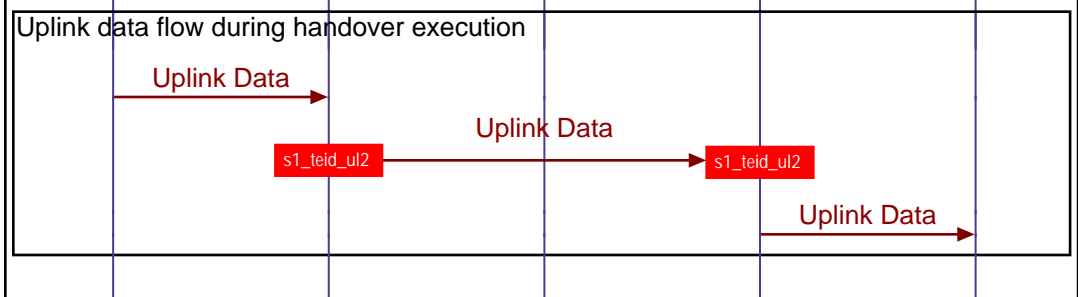
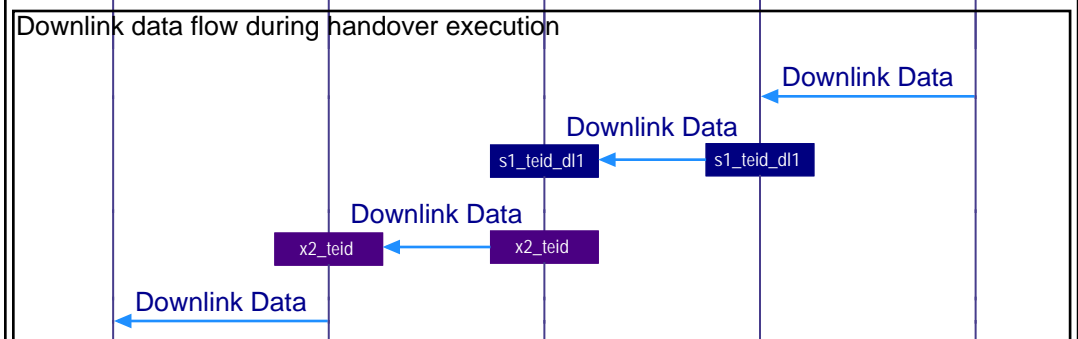


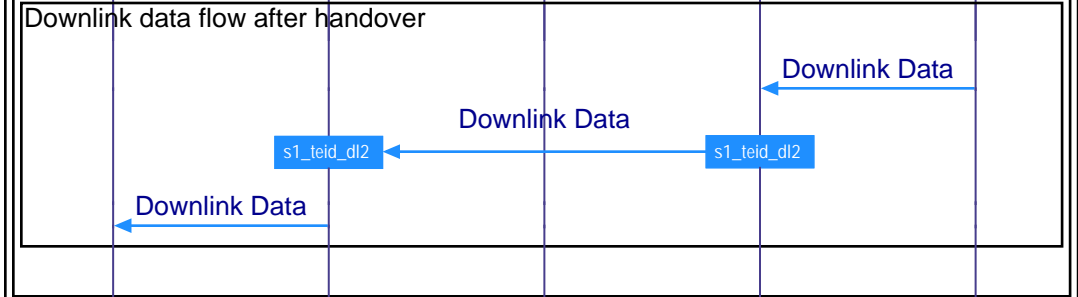
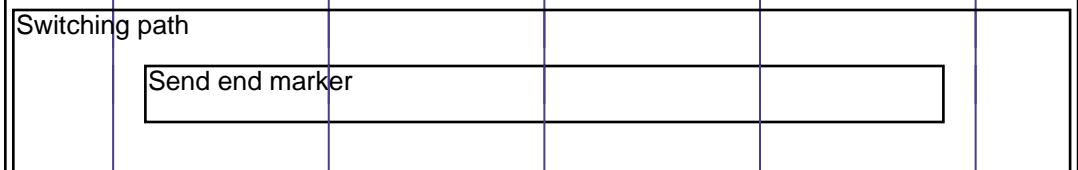
GTP connect for the uplink side is established between the Target eNodeB and the serving SGW.

^{Uplink}{Downlink} Interfaces (Successful Handover)

LTE Mobile	eNodeB Network		Core Network		EventStudio System Designer 6
UE	Target eNodeB	Source eNodeB	SGW	PGW	20-Apr-13 20:28 (Page 2)



Handover completion



SGW is now sending the data using the target eNodeB TEID.