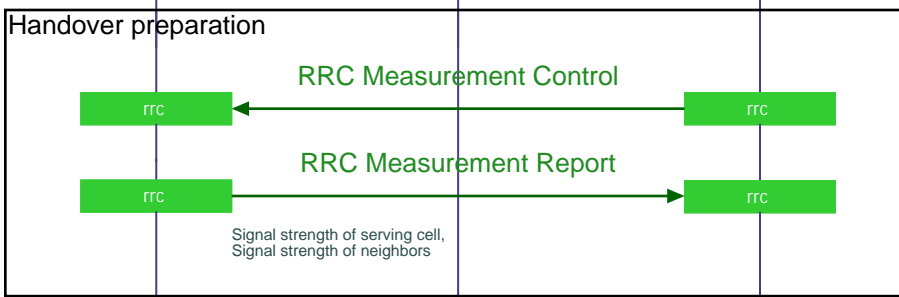
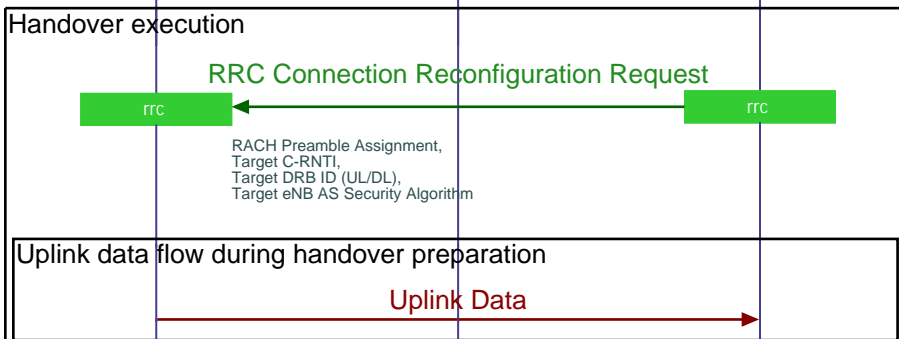


The UE and Source eNodeB are in RRC Connected state.

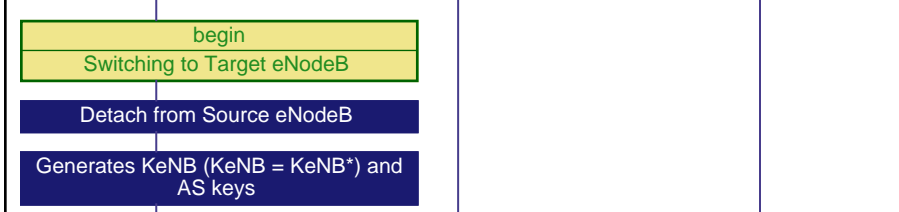


The network sets the measurement thresholds for sending measurement reports.

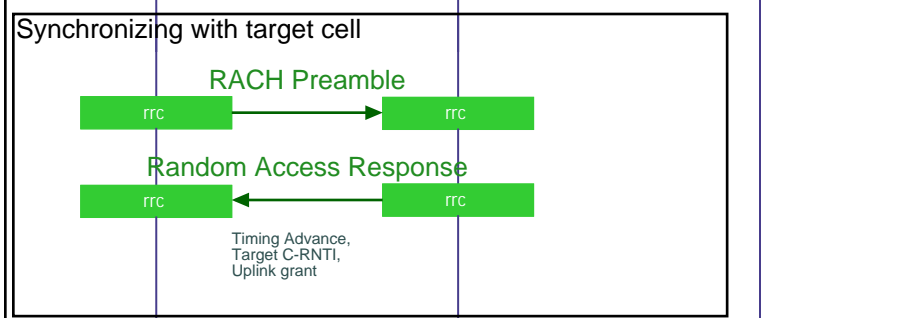
Neighboring cell signal quality is now better than the serving cell.



The Source eNodeB sends a handover command to the UE. The message contains a new C-RNTI and new DRB IDs. A RACH preamble is also included for contention free RACH access.



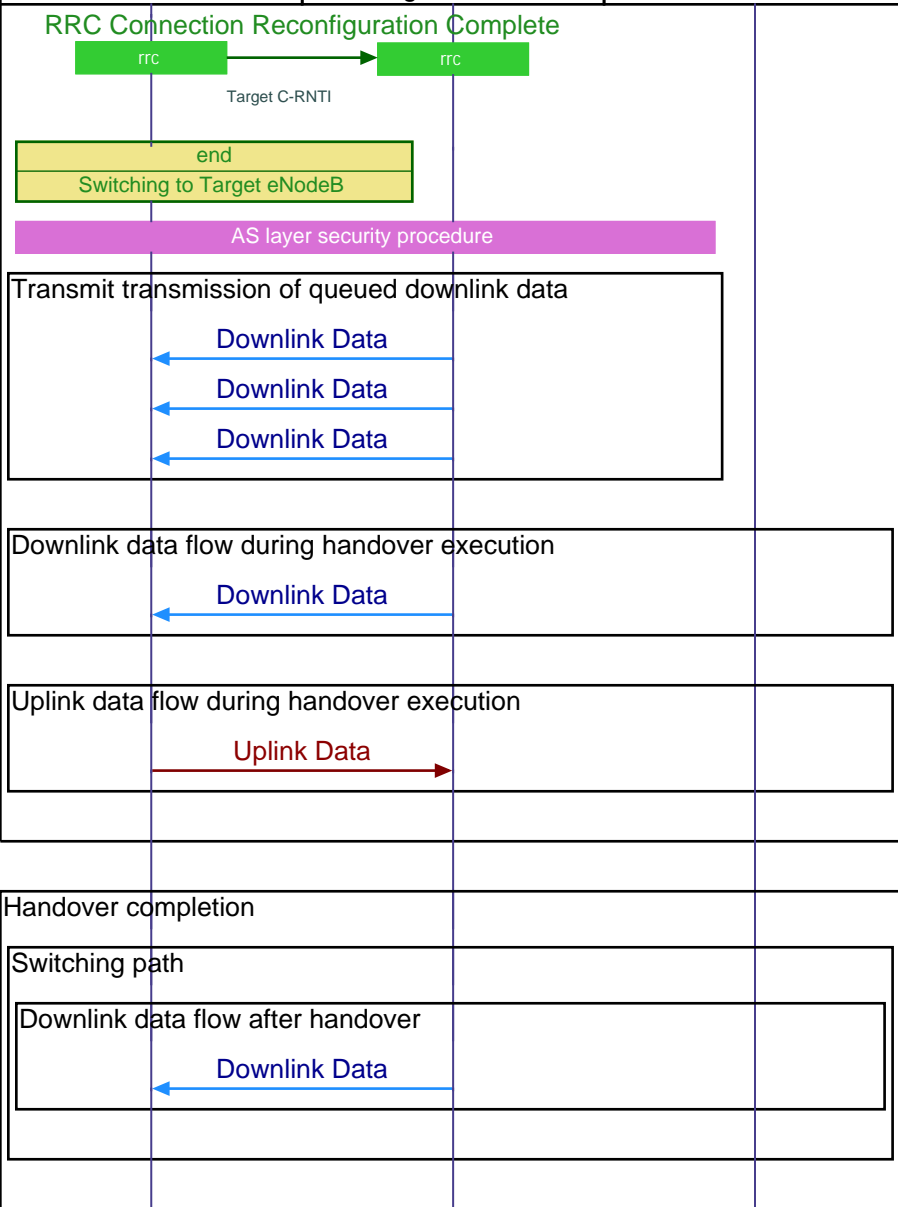
Meanwhile, the UE has received the handover command and it is switching to the new target cell.



UE uses the preamble assigned in the handover command to send a RACH to the target eNodeB.

The target eNodeB accepts the request and responds back with a timing adjustment and an uplink resource grant.

UE Interfaces (Successful Handover)



The UE uses the assigned resources to transmit the Handover Confirm message (RRC Connection Reconfiguration Complete).