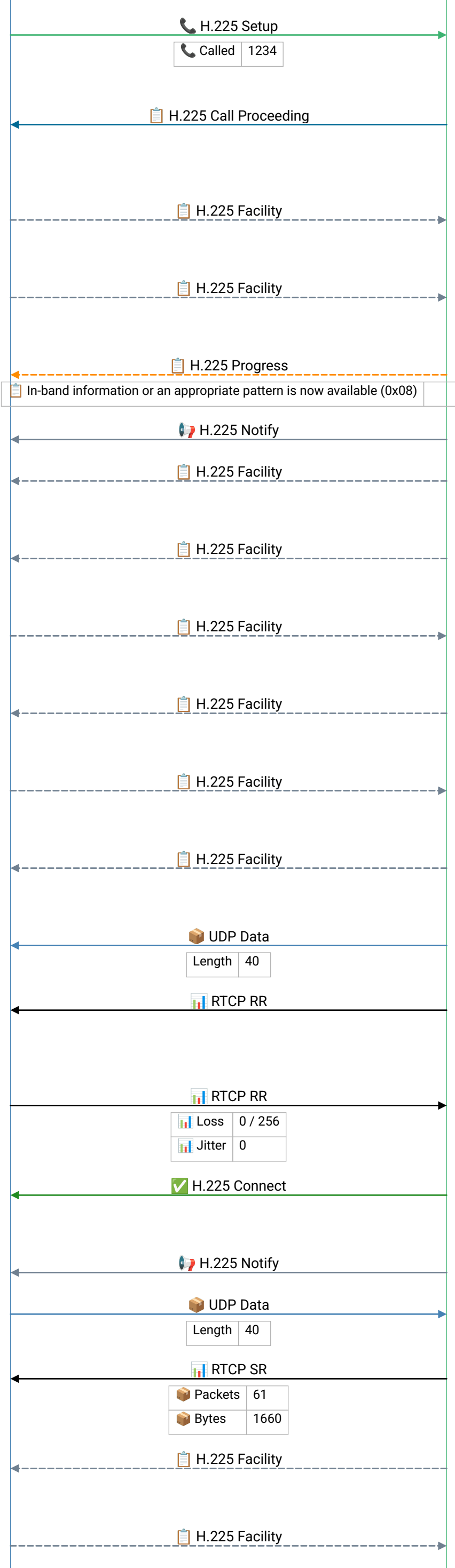


fax_h323_passthru_tgw.pcapng



H.225 Setup – initiates an H.323 call; carries called/calling numbers, bearer capability, and H.245 address for media negotiation

Call Proceeding – gateway accepted the Setup and is routing the call; H.245 address may be included for early media negotiation

Facility – mid-call supplementary service (hold, transfer, conference); also used for H.245 tunneling and call diversion

Facility – mid-call supplementary service (hold, transfer, conference); also used for H.245 tunneling and call diversion

Frame 7 | 2017-04-24T21:20:45.27068Z

Frame 8 | 2017-04-24T21:20:45.271542Z

Facility – mid-call supplementary service (hold, transfer, conference); also used for H.245 tunneling and call diversion

Facility – mid-call supplementary service (hold, transfer, conference); also used for H.245 tunneling and call diversion

Facility – mid-call supplementary service (hold, transfer, conference); also used for H.245 tunneling and call diversion

Facility – mid-call supplementary service (hold, transfer, conference); also used for H.245 tunneling and call diversion

Facility – mid-call supplementary service (hold, transfer, conference); also used for H.245 tunneling and call diversion

Facility – mid-call supplementary service (hold, transfer, conference); also used for H.245 tunneling and call diversion

Frame 19 | 2017-04-24T21:20:45.32451Z

RTCP Receiver Report – reports packet loss fraction and jitter for each source; high jitter or loss indicates network congestion affecting voice quality

RTCP Receiver Report – reports packet loss fraction and jitter for each source; high jitter or loss indicates network congestion affecting voice quality

Connect – call answered; media channel is now established; both sides exchange RTP audio/video on negotiated ports


Frame 987 | 2017-04-24T21:21:04.466993Z


Frame 1005 | 2017-04-24T21:21:04.799254Z

RTCP Sender Report – media sender reports packet/byte counts and NTP timestamp for lip-sync; receivers use this to calculate jitter and loss


Facility – mid-call supplementary service (hold, transfer, conference); also used for H.245 tunneling and call diversion


Facility – mid-call supplementary service (hold,

 Fax OGW

 Fax TGW

 H.225 Release Complete

 Cause Normal call clearing (16)

 Release Complete – call terminated; Cause value explains why (16=Normal clearing, 17=User busy, 34=No circuit available)