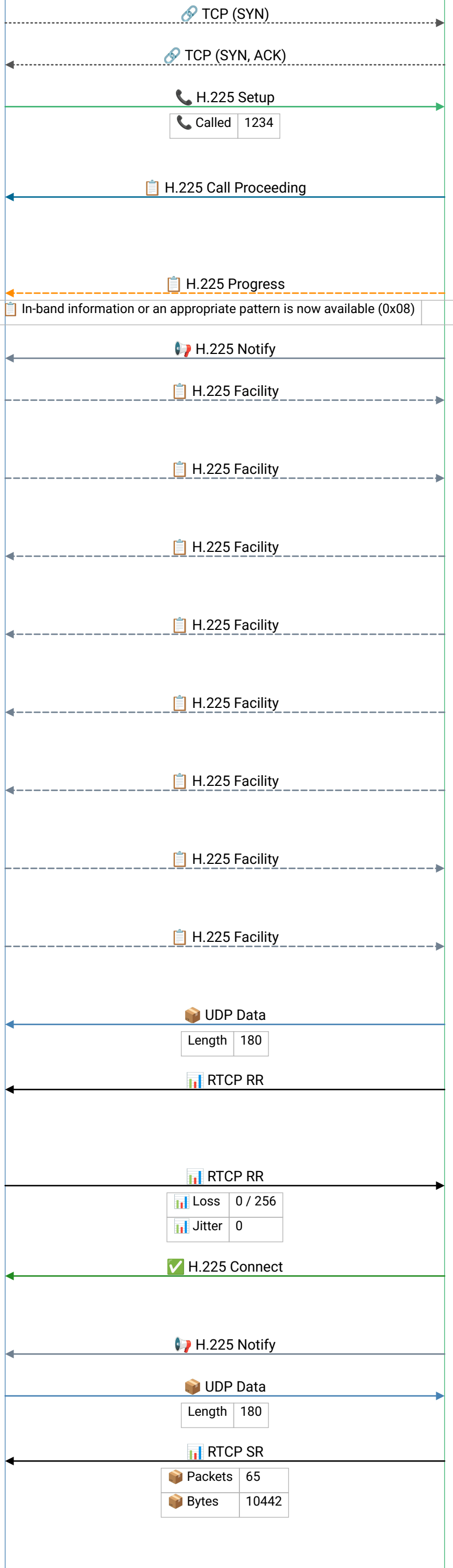


fax_t38_h323_tgw.pcapng



Frame 1 |
2017-04-24T20:40:29.402224Z

Frame 2 |
2017-04-24T20:40:29.402525Z

💡 H.225 Setup – initiates an H.323 call; carries called/calling numbers, bearer capability, and H.245 address for media negotiation

💡 Call Proceeding – gateway accepted the Setup and is routing the call; H.245 address may be included for early media negotiation

Frame 7 |
2017-04-24T20:40:29.422381Z

Frame 8 |
2017-04-24T20:40:29.42325Z

💡 Facility – mid-call supplementary service (hold, transfer, conference); also used for H.245 tunneling and call diversion

💡 Facility – mid-call supplementary service (hold, transfer, conference); also used for H.245 tunneling and call diversion

💡 Facility – mid-call supplementary service (hold, transfer, conference); also used for H.245 tunneling and call diversion

💡 Facility – mid-call supplementary service (hold, transfer, conference); also used for H.245 tunneling and call diversion

💡 Facility – mid-call supplementary service (hold, transfer, conference); also used for H.245 tunneling and call diversion

💡 Facility – mid-call supplementary service (hold, transfer, conference); also used for H.245 tunneling and call diversion

💡 Facility – mid-call supplementary service (hold, transfer, conference); also used for H.245 tunneling and call diversion

💡 Facility – mid-call supplementary service (hold, transfer, conference); also used for H.245 tunneling and call diversion

Frame 21 |
2017-04-24T20:40:29.450693Z

💡 RTCP Receiver Report – reports packet loss fraction and jitter for each source; high jitter or loss indicates network congestion affecting voice quality


💡 RTCP Receiver Report – reports packet loss fraction and jitter for each source; high jitter or loss indicates network congestion affecting voice quality


💡 Connect – call answered; media channel is now established; both sides exchange RTP audio/video on negotiated ports

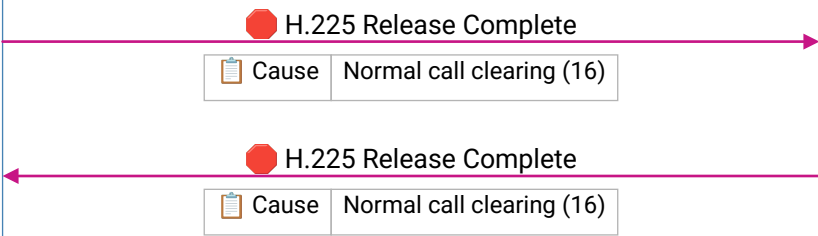
Frame 989 |
2017-04-24T20:40:48.65516Z

Frame 998 |
2017-04-24T20:40:48.795351Z


💡 RTCP Sender Report – media sender reports packet/byte counts and NTP timestamp for lip-sync; receivers use this to calculate jitter and loss


 Fax OGW

 Fax TGW



transfer, conference); also used for H.245 tunneling and call diversion

 Release Complete – call terminated; Cause value explains why (16=Normal clearing, 17=User busy, 34=No circuit available)

 Release Complete – call terminated; Cause value explains why (16=Normal clearing, 17=User busy, 34=No circuit available)