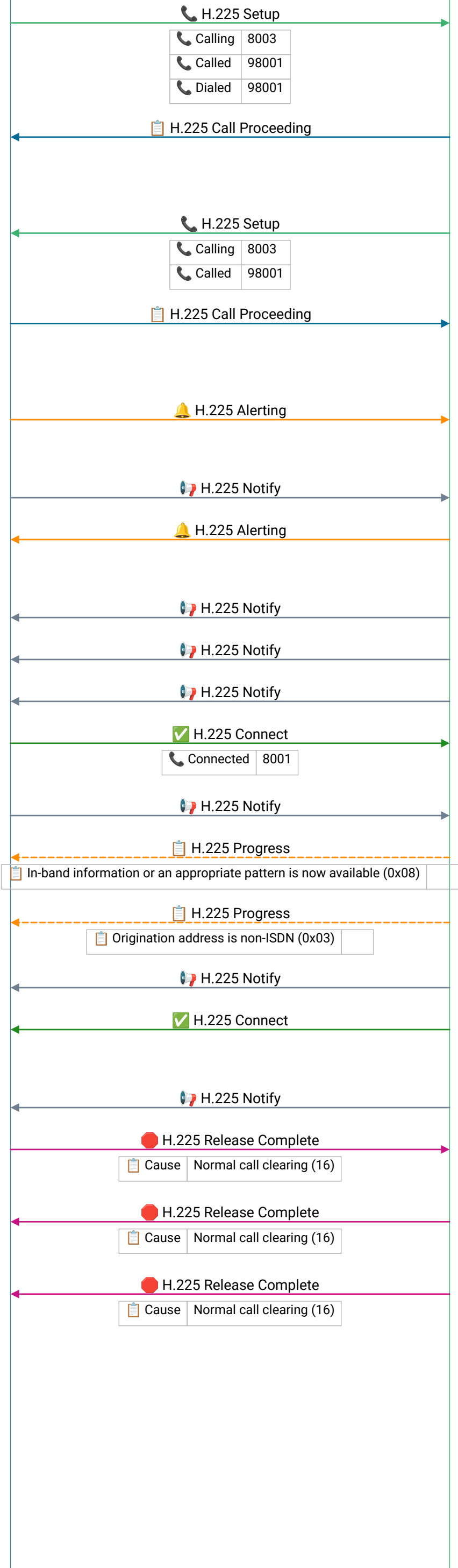


h245\_signal.pcapng



**H.225 Setup** – initiates an H.323 call; carries called/calling numbers, bearer capability, and H.245 address for media negotiation

**Call Proceeding** – gateway accepted the Setup and is routing the call; H.245 address may be included for early media negotiation

**H.225 Setup** – initiates an H.323 call; carries called/calling numbers, bearer capability, and H.245 address for media negotiation

**Call Proceeding** – gateway accepted the Setup and is routing the call; H.245 address may be included for early media negotiation

**Alerting** – remote phone is ringing; caller hears ringback tone; Progress indicator may signal in-band audio available

Frame 6 | 2015-05-04T23:28:51.690529Z

**Alerting** – remote phone is ringing; caller hears ringback tone; Progress indicator may signal in-band audio available

Frame 8 | 2015-05-04T23:28:51.690871Z

Frame 9 | 2015-05-04T23:28:51.69094Z

Frame 10 | 2015-05-04T23:28:51.691294Z

**Connect** – call answered; media channel is now established; both sides exchange RTP audio/video on negotiated ports

Frame 12 | 2015-05-04T23:28:52.698034Z

Frame 13 | 2015-05-04T23:28:52.698904Z

Frame 14 | 2015-05-04T23:28:52.698998Z

Frame 15 | 2015-05-04T23:28:52.699074Z

**Connect** – call answered; media channel is now established; both sides exchange RTP audio/video on negotiated ports

Frame 23 | 2015-05-04T23:28:52.721578Z

**Release Complete** – call terminated; Cause value explains why (16=Normal clearing, 17=User busy, 34=No circuit available)

**Release Complete** – call terminated; Cause value explains why (16=Normal clearing, 17=User busy, 34=No circuit available)

**Release Complete** – call terminated; Cause value explains why (16=Normal clearing, 17=User busy, 34=No circuit available)