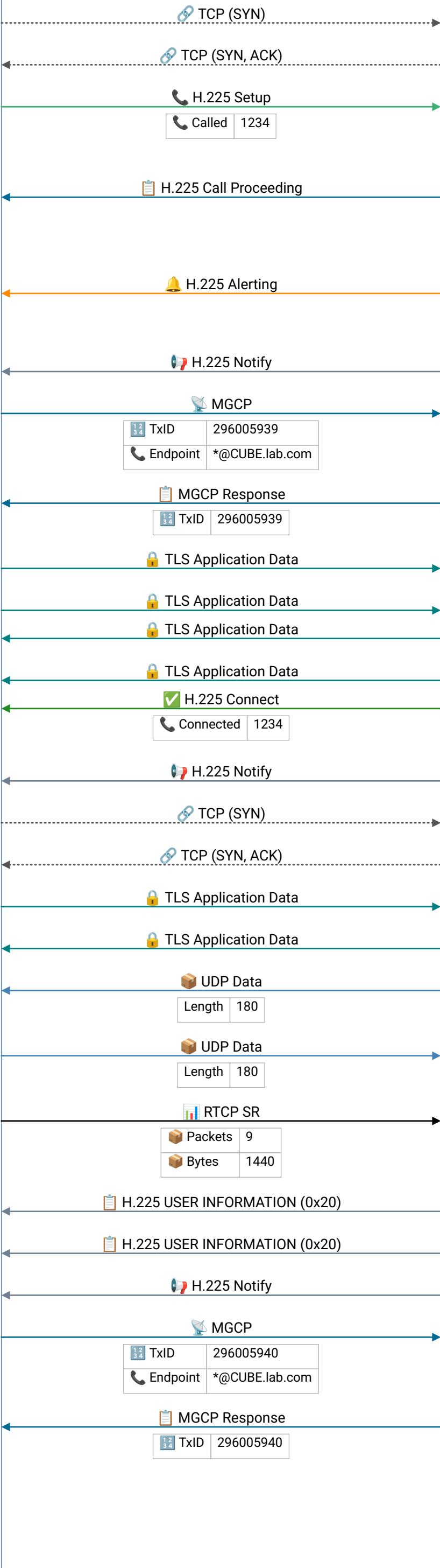


H323 Endpoint B

H323 Endpoint A

h323\_ss\_hold\_resume.pcapng



Frame 1 | 2019-05-04T14:57:03.731956Z

Frame 2 | 2019-05-04T14:57:03.731956Z

H.225 Setup – initiates an H.323 call; carries called/calling numbers, bearer capability, and H.245 address for media negotiation

Call Proceeding – gateway accepted the Setup and is routing the call; H.245 address may be included for early media negotiation

Alerting – remote phone is ringing; caller hears ringback tone; Progress indicator may signal in-band audio available

Frame 8 | 2019-05-04T14:57:03.783956Z

Frame 10 | 2019-05-04T14:57:03.969935Z

Frame 11 | 2019-05-04T14:57:03.970942Z

Frame 13 | 2019-05-04T14:57:04.092982Z

Frame 14 | 2019-05-04T14:57:04.092982Z

Connect – call answered; media channel is now established; both sides exchange RTP audio/video on negotiated ports

Frame 17 | 2019-05-04T14:57:04.822955Z

Frame 19 | 2019-05-04T14:57:04.824954Z

Frame 20 | 2019-05-04T14:57:04.824954Z

Frame 39 | 2019-05-04T14:57:07.668956Z

Frame 40 | 2019-05-04T14:57:07.668956Z

Frame 65 | 2019-05-04T14:57:08.100992Z

Frame 66 | 2019-05-04T14:57:08.102991Z

RTCP Sender Report – media sender reports packet/byte counts and NTP timestamp for lip-sync; receivers use this to calculate jitter and loss

Frame 721 | 2019-05-04T14:57:18.731956Z

Frame 722 | 2019-05-04T14:57:18.732948Z

Frame 724 | 2019-05-04T14:57:18.732948Z

Frame 743 | 2019-05-04T14:57:18.969935Z

Frame 744 | 2019-05-04T14:57:18.969935Z