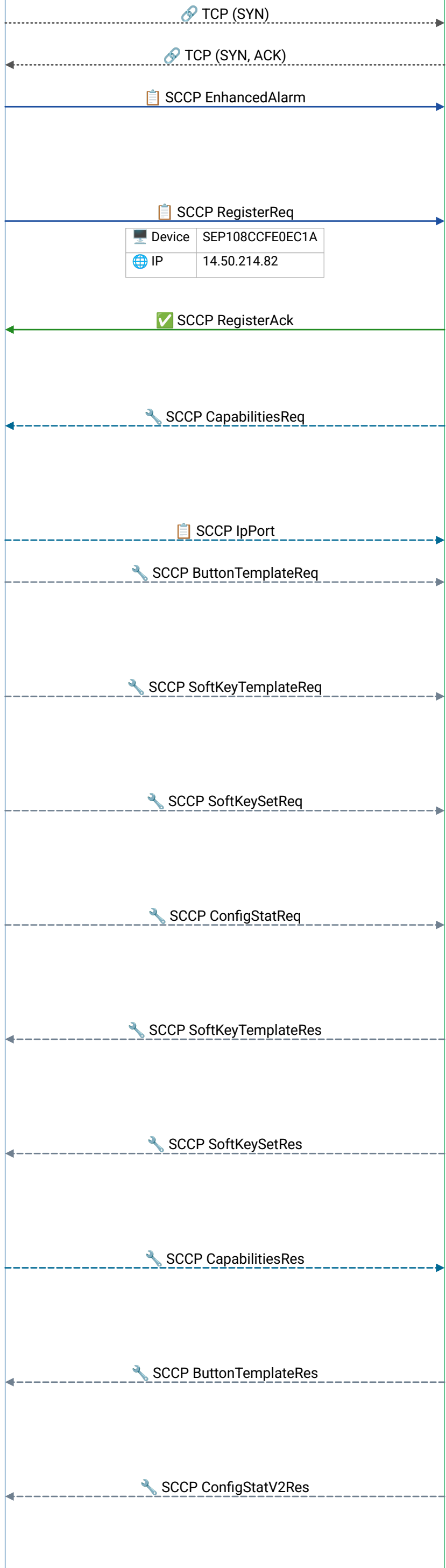


sccp_cme_init.pcapng



Frame 1 | 2019-07-23T20:06:49.666957Z

Frame 2 | 2019-07-23T20:06:49.667964Z

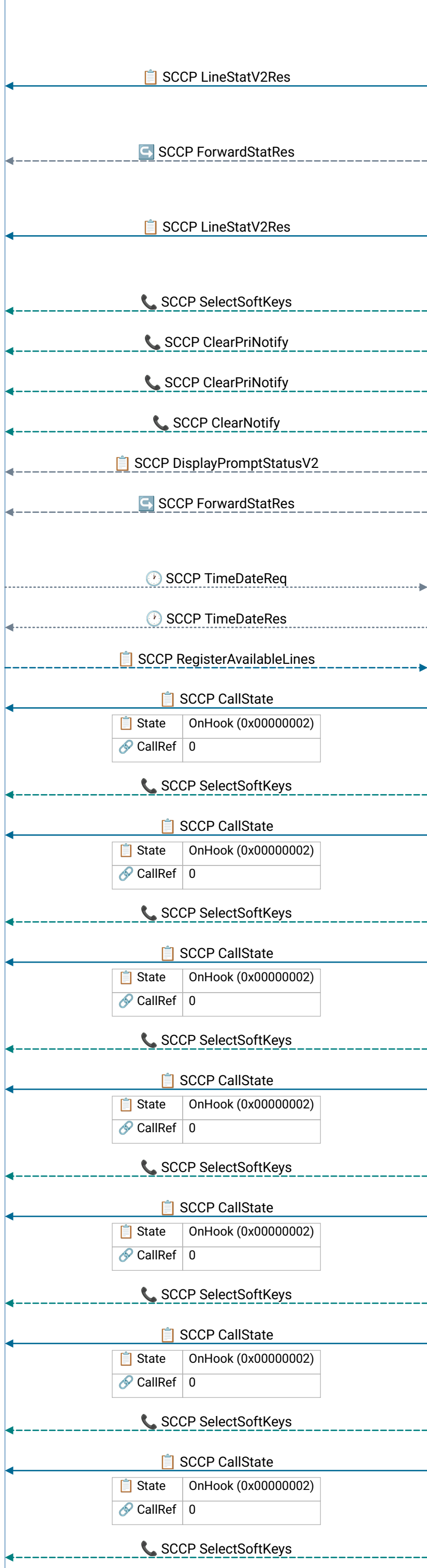
- 💡 SCCP RegisterReq – phone sends its device name (SEP + MAC), IP address, and protocol version to CUCM; CUCM responds with RegisterAck and begins provisioning
- 💡 SCCP RegisterReq – phone sends its device name (SEP + MAC), IP address, and protocol version to CUCM; CUCM responds with RegisterAck and begins provisioning
- 💡 SCCP RegisterAck – CUCM accepts the phone; follows with CapabilitiesReq, ButtonTemplate, SoftKeyTemplate to provision the phone's features
- 💡 CUCM asks phone for supported codecs (G.711, G.722, G.729); phone replies with its codec list; CUCM uses this for region-based codec selection during calls

Frame 18 | 2019-07-23T20:06:50.493962Z

- 💡 Phone provisioning – CUCM sends button layout (line/speed-dial/BLF), soft key labels, and device configuration; phone renders its UI from these templates
- 💡 Phone provisioning – CUCM sends button layout (line/speed-dial/BLF), soft key labels, and device configuration; phone renders its UI from these templates
- 💡 Phone provisioning – CUCM sends button layout (line/speed-dial/BLF), soft key labels, and device configuration; phone renders its UI from these templates
- 💡 Phone provisioning – CUCM sends button layout (line/speed-dial/BLF), soft key labels, and device configuration; phone renders its UI from these templates
- 💡 Phone provisioning – CUCM sends button layout (line/speed-dial/BLF), soft key labels, and device configuration; phone renders its UI from these templates
- 💡 Phone provisioning – CUCM sends button layout (line/speed-dial/BLF), soft key labels, and device configuration; phone renders its UI from these templates
- 💡 CUCM asks phone for supported codecs (G.711, G.722, G.729); phone replies with its codec list; CUCM uses this for region-based codec selection during calls
- 💡 Phone provisioning – CUCM sends button layout (line/speed-dial/BLF), soft key labels, and device configuration; phone renders its UI from these templates
- 💡 Phone provisioning – CUCM sends button layout (line/speed-dial/BLF), soft key labels, and device configuration; phone renders its UI from these templates

SCCP CME Phone

SIP Proxy



queries/receives CFA (Call Forward All), CFB (Busy), CFNA (No Answer) settings per line

💡 Phone queries directory number (DN) for each line button; CUCM responds with the DN, display name, and voicemail settings

💡 Call forwarding status – phone queries/receives CFA (Call Forward All), CFB (Busy), CFNA (No Answer) settings per line

💡 Phone queries directory number (DN) for each line button; CUCM responds with the DN, display name, and voicemail settings

Frame 66 | 2019-07-23T20:06:50.706948Z

Frame 67 | 2019-07-23T20:06:50.707955Z

Frame 68 | 2019-07-23T20:06:50.707955Z

Frame 69 | 2019-07-23T20:06:50.707955Z

Frame 70 | 2019-07-23T20:06:50.707955Z

Frame 73 | 2019-07-23T20:06:50.876953Z

Frame 74 | 2019-07-23T20:06:50.876953Z

Frame 76 | 2019-07-23T20:06:51.253984Z

💡 CUCM pushes call state to phone – OffHook/Proceed/RingOut/Connected/OnHook; phone updates display and soft keys accordingly

Frame 78 | 2019-07-23T20:06:51.256975Z

💡 CUCM pushes call state to phone – OffHook/Proceed/RingOut/Connected/OnHook; phone updates display and soft keys accordingly

Frame 80 | 2019-07-23T20:06:51.256975Z

💡 CUCM pushes call state to phone – OffHook/Proceed/RingOut/Connected/OnHook; phone updates display and soft keys accordingly

Frame 82 | 2019-07-23T20:06:51.256975Z

💡 CUCM pushes call state to phone – OffHook/Proceed/RingOut/Connected/OnHook; phone updates display and soft keys accordingly

Frame 84 | 2019-07-23T20:06:51.257982Z

💡 CUCM pushes call state to phone – OffHook/Proceed/RingOut/Connected/OnHook; phone updates display and soft keys accordingly

Frame 86 | 2019-07-23T20:06:51.257982Z

💡 CUCM pushes call state to phone – OffHook/Proceed/RingOut/Connected/OnHook; phone updates display and soft keys accordingly

Frame 88 | 2019-07-23T20:06:51.257982Z

💡 CUCM pushes call state to phone – OffHook/Proceed/RingOut/Connected/OnHook; phone updates display and soft keys accordingly

Frame 90 |

SCCP CME Phone

SIP Proxy

