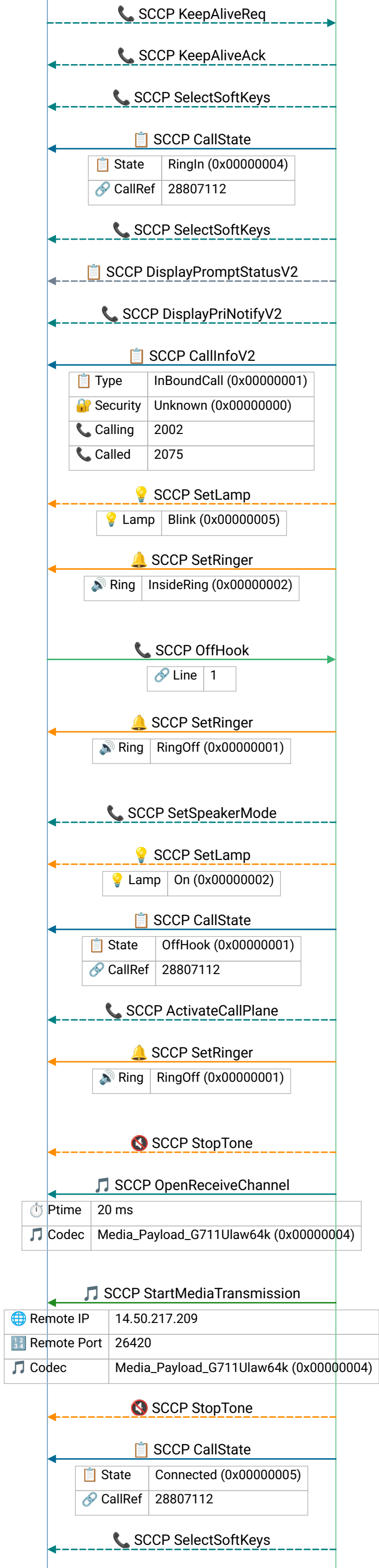


MGCP FXS GW

MGCP Call Agent A

MGCP Remote

sccp_fxs_inbound.pcapng



Frame 1 |
2019-05-04T14:09:20.482846Z

Frame 2 |
2019-05-04T14:09:20.482846Z

Frame 3 |
2019-05-04T14:09:23.686845Z

💡 CUCM pushes call state to phone – OffHook/Proceed/RingOut/Connected/OnHook; phone updates display and soft keys accordingly

Frame 5 |
2019-05-04T14:09:23.730844Z

Frame 6 |
2019-05-04T14:09:23.730844Z

Frame 7 |
2019-05-04T14:09:23.730844Z

💡 CUCM sends caller/called party info for phone display; callType (InBound/OutBound) and security status (Authenticated/Encrypted) update the lock icon

Frame 9 |
2019-05-04T14:09:23.730844Z

💡 CUCM controls the physical ringer – RingOff on answer/cancel, InsideRing for internal calls, OutsideRing for external; distinctive ring identifies call source

💡 SCCP OffHook – phone notifies CUCM the handset is lifted; CUCM responds with dial tone (StartTone) and prepares to collect digits

💡 CUCM controls the physical ringer – RingOff on answer/cancel, InsideRing for internal calls, OutsideRing for external; distinctive ring identifies call source

Frame 13 |
2019-05-04T14:09:26.06285Z

Frame 14 |
2019-05-04T14:09:26.06285Z

💡 CUCM pushes call state to phone – OffHook/Proceed/RingOut/Connected/OnHook; phone updates display and soft keys accordingly

Frame 16 |
2019-05-04T14:09:26.066849Z

💡 CUCM controls the physical ringer – RingOff on answer/cancel, InsideRing for internal calls, OutsideRing for external; distinctive ring identifies call source

Frame 18 |
2019-05-04T14:09:26.114849Z

💡 CUCM tells phone to open an RTP receive channel with specified codec and packetization; phone responds with OpenReceiveChannelAck containing its IP:port

💡 CUCM tells phone where to send RTP – remote IP:port is the other phone's receive address; codec must match the negotiated type

Frame 21 |
2019-05-04T14:09:26.114849Z

💡 CUCM pushes call state to phone – OffHook/Proceed/RingOut/Connected/OnHook; phone updates display and soft keys accordingly

Frame 23 |
2019-05-04T14:09:26.114849Z

