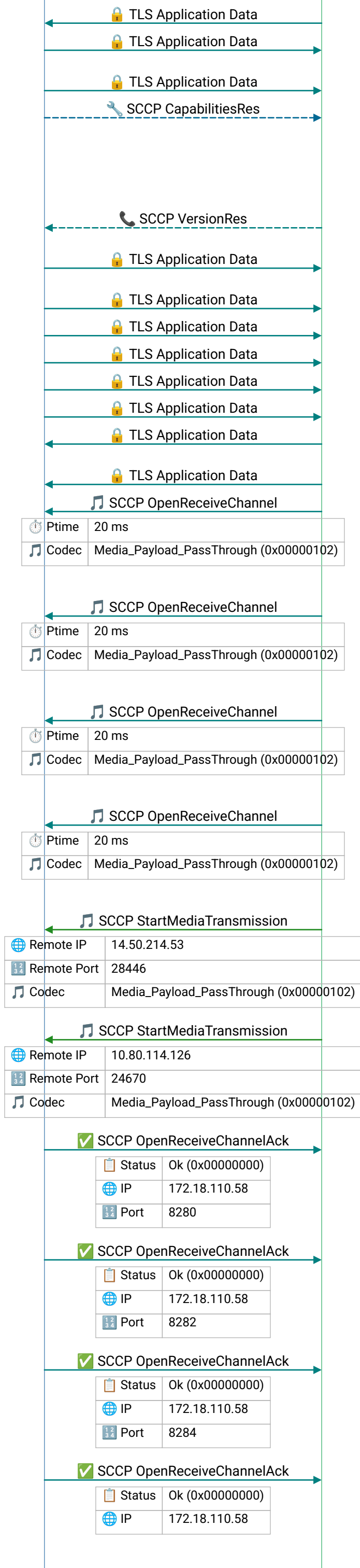


SIP Proxy

SIP Phone A

SCCP TLS Phone



Frame 29 |  
2019-05-02T19:47:20.709954Z

💡 CUCM asks phone for supported codecs (G.711, G.722, G.729); phone replies with its codec list; CUCM uses this for region-based codec selection during calls

Frame 33 |  
2019-05-02T19:47:20.745948Z

Frame 35 |  
2019-05-02T19:47:20.748954Z

Frame 37 |  
2019-05-02T19:47:20.750952Z

💡 CUCM tells phone to open an RTP receive channel with specified codec and packetization; phone responds with OpenReceiveChannelAck containing its IP:port

💡 CUCM tells phone to open an RTP receive channel with specified codec and packetization; phone responds with OpenReceiveChannelAck containing its IP:port

💡 CUCM tells phone to open an RTP receive channel with specified codec and packetization; phone responds with OpenReceiveChannelAck containing its IP:port

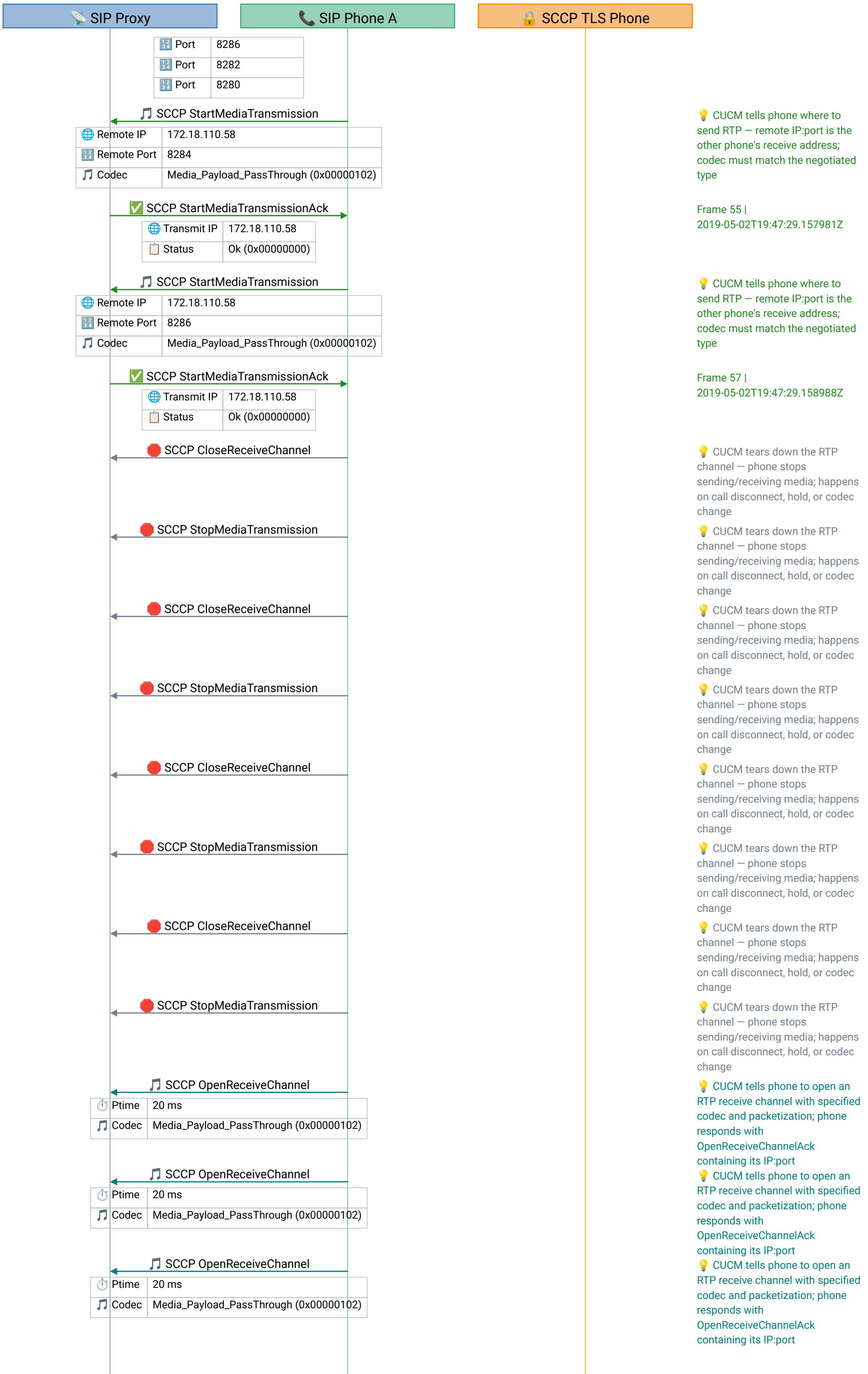
💡 CUCM tells phone to open an RTP receive channel with specified codec and packetization; phone responds with OpenReceiveChannelAck containing its IP:port

💡 CUCM tells phone where to send RTP – remote IP:port is the other phone's receive address; codec must match the negotiated type

💡 CUCM tells phone where to send RTP – remote IP:port is the other phone's receive address; codec must match the negotiated type

Frame 48 |  
2019-05-02T19:47:29.115991Z

Frame 52 |  
2019-05-02T19:47:29.155982Z



💡 CUCM tells phone where to send RTP – remote IP:port is the other phone's receive address; codec must match the negotiated type

Frame 55 | 2019-05-02T19:47:29.157981Z

💡 CUCM tells phone where to send RTP – remote IP:port is the other phone's receive address; codec must match the negotiated type

Frame 57 | 2019-05-02T19:47:29.158988Z

💡 CUCM tears down the RTP channel – phone stops sending/receiving media; happens on call disconnect, hold, or codec change

💡 CUCM tears down the RTP channel – phone stops sending/receiving media; happens on call disconnect, hold, or codec change

💡 CUCM tears down the RTP channel – phone stops sending/receiving media; happens on call disconnect, hold, or codec change

💡 CUCM tears down the RTP channel – phone stops sending/receiving media; happens on call disconnect, hold, or codec change

💡 CUCM tears down the RTP channel – phone stops sending/receiving media; happens on call disconnect, hold, or codec change

💡 CUCM tears down the RTP channel – phone stops sending/receiving media; happens on call disconnect, hold, or codec change

💡 CUCM tears down the RTP channel – phone stops sending/receiving media; happens on call disconnect, hold, or codec change

💡 CUCM tears down the RTP channel – phone stops sending/receiving media; happens on call disconnect, hold, or codec change

💡 CUCM tells phone to open an RTP receive channel with specified codec and packetization; phone responds with OpenReceiveChannelAck containing its IP:port

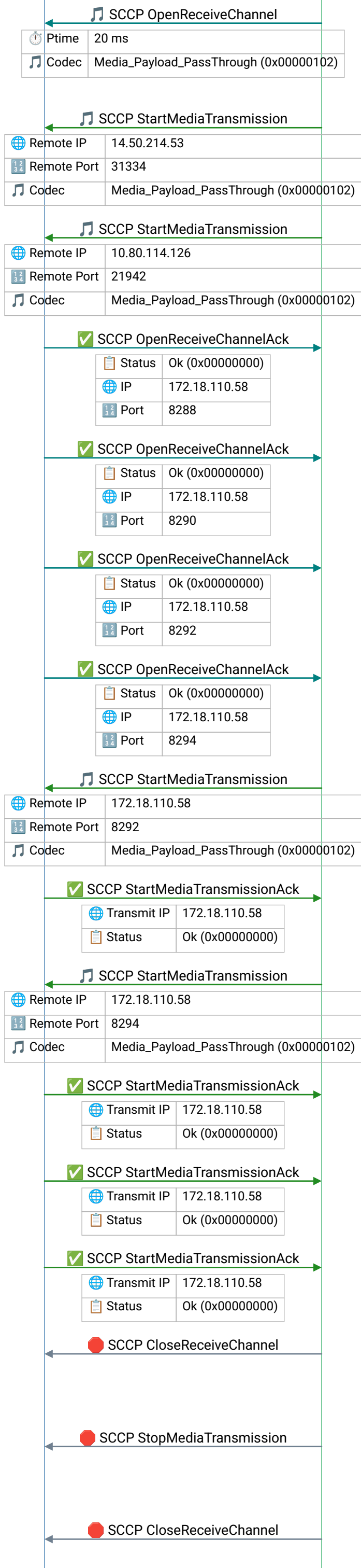
💡 CUCM tells phone to open an RTP receive channel with specified codec and packetization; phone responds with OpenReceiveChannelAck containing its IP:port

💡 CUCM tells phone to open an RTP receive channel with specified codec and packetization; phone responds with OpenReceiveChannelAck containing its IP:port

SIP Proxy

SIP Phone A

SCCP TLS Phone



💡 CUCM tells phone to open an RTP receive channel with specified codec and packetization; phone responds with OpenReceiveChannelAck containing its IP:port

💡 CUCM tells phone where to send RTP – remote IP:port is the other phone's receive address; codec must match the negotiated type

💡 CUCM tells phone where to send RTP – remote IP:port is the other phone's receive address; codec must match the negotiated type

Frame 81 | 2019-05-02T19:47:37.101984Z

Frame 83 | 2019-05-02T19:47:37.102991Z

Frame 85 | 2019-05-02T19:47:37.102991Z

💡 CUCM tells phone where to send RTP – remote IP:port is the other phone's receive address; codec must match the negotiated type

Frame 88 | 2019-05-02T19:47:37.103983Z

💡 CUCM tells phone where to send RTP – remote IP:port is the other phone's receive address; codec must match the negotiated type

Frame 91 | 2019-05-02T19:47:37.105982Z

Frame 93 | 2019-05-02T19:47:37.145988Z

💡 CUCM tears down the RTP channel – phone stops sending/receiving media; happens on call disconnect, hold, or codec change

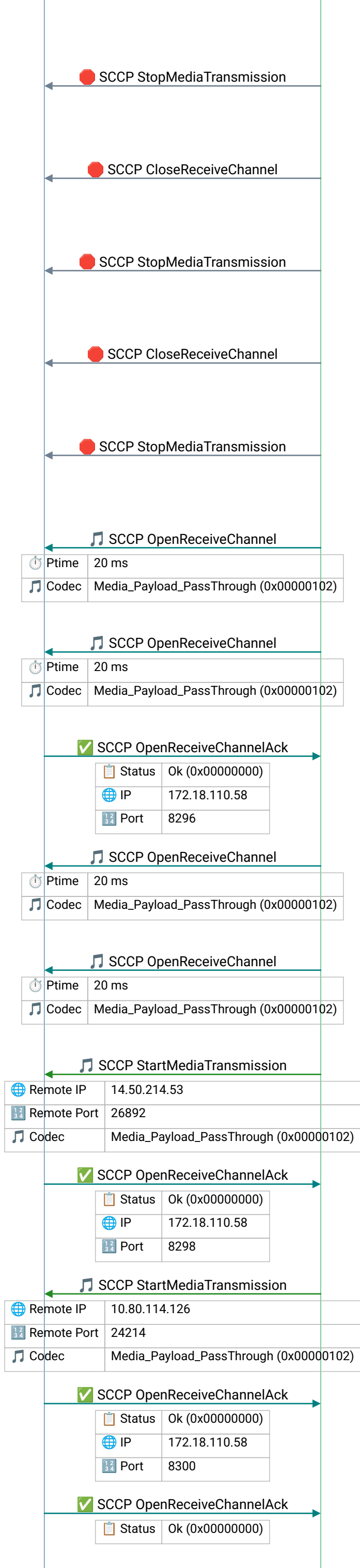
💡 CUCM tears down the RTP channel – phone stops sending/receiving media; happens on call disconnect, hold, or codec change

💡 CUCM tears down the RTP channel – phone stops

SIP Proxy

SIP Phone A

SCCP TLS Phone



sending/receiving media; happens on call disconnect, hold, or codec change

💡 CUCM tears down the RTP channel – phone stops sending/receiving media; happens on call disconnect, hold, or codec change

💡 CUCM tears down the RTP channel – phone stops sending/receiving media; happens on call disconnect, hold, or codec change

💡 CUCM tears down the RTP channel – phone stops sending/receiving media; happens on call disconnect, hold, or codec change

💡 CUCM tears down the RTP channel – phone stops sending/receiving media; happens on call disconnect, hold, or codec change

💡 CUCM tears down the RTP channel – phone stops sending/receiving media; happens on call disconnect, hold, or codec change

💡 CUCM tells phone to open an RTP receive channel with specified codec and packetization; phone responds with **OpenReceiveChannelAck** containing its IP:port

💡 CUCM tells phone to open an RTP receive channel with specified codec and packetization; phone responds with **OpenReceiveChannelAck** containing its IP:port  
Frame 111 | 2019-05-02T19:47:45.019987Z

💡 CUCM tells phone to open an RTP receive channel with specified codec and packetization; phone responds with **OpenReceiveChannelAck** containing its IP:port

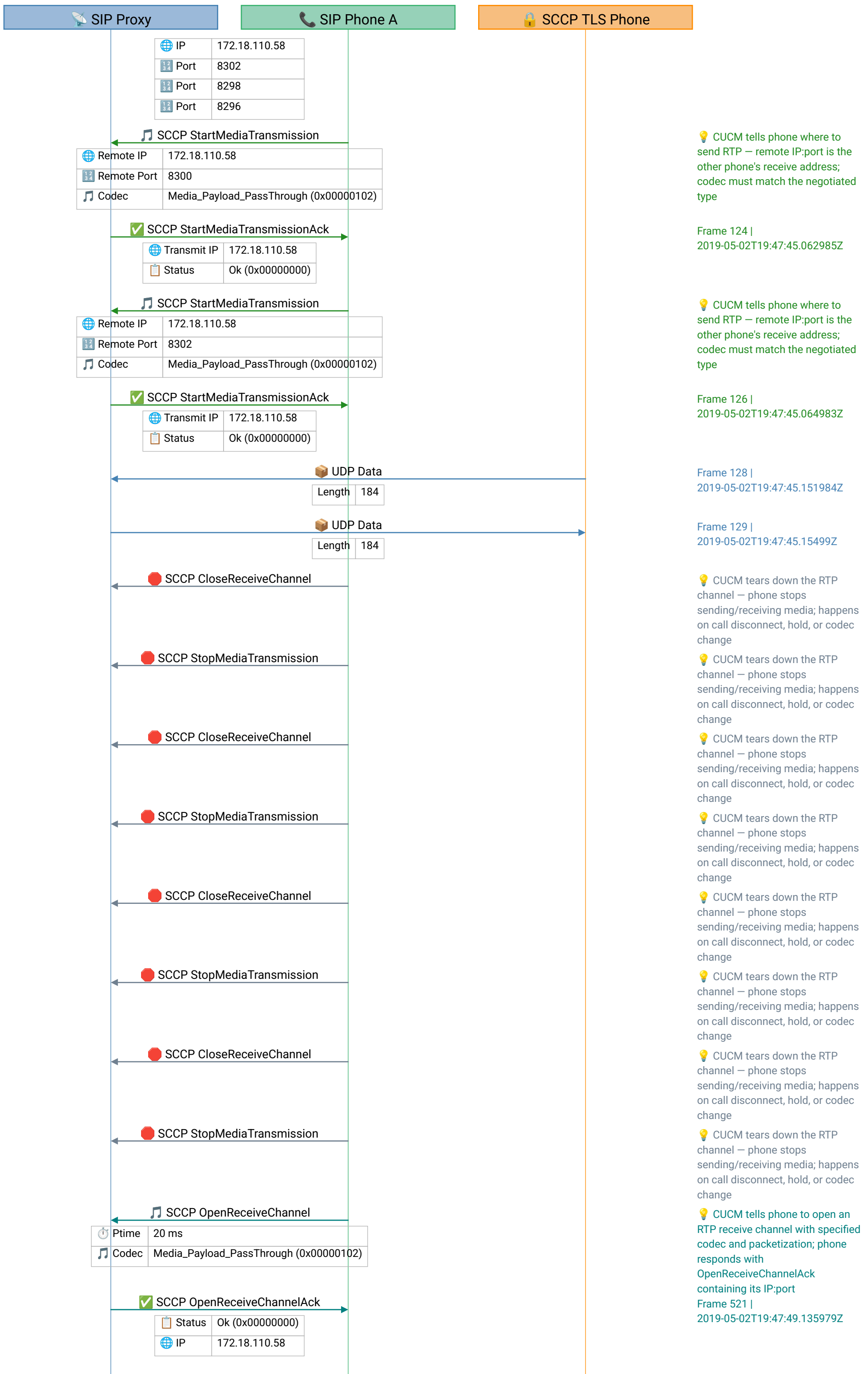
💡 CUCM tells phone to open an RTP receive channel with specified codec and packetization; phone responds with **OpenReceiveChannelAck** containing its IP:port

💡 CUCM tells phone where to send RTP – remote IP:port is the other phone's receive address; codec must match the negotiated type

Frame 116 | 2019-05-02T19:47:45.019987Z

💡 CUCM tells phone where to send RTP – remote IP:port is the other phone's receive address; codec must match the negotiated type

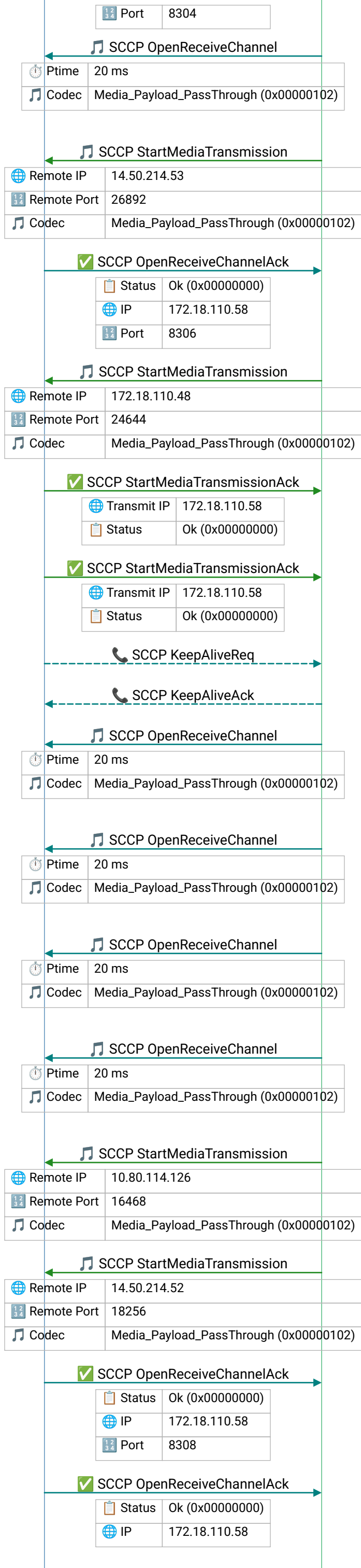
Frame 121 | 2019-05-02T19:47:45.061993Z



SIP Proxy

SIP Phone A

SCCP TLS Phone



💡 CUCM tells phone to open an RTP receive channel with specified codec and packetization; phone responds with OpenReceiveChannelAck containing its IP:port

💡 CUCM tells phone where to send RTP – remote IP:port is the other phone's receive address; codec must match the negotiated type

Frame 526 | 2019-05-02T19:47:49.138985Z

💡 CUCM tells phone where to send RTP – remote IP:port is the other phone's receive address; codec must match the negotiated type

Frame 528 | 2019-05-02T19:47:49.140983Z

Frame 530 | 2019-05-02T19:47:49.18099Z

Frame 532 | 2019-05-02T19:47:52.326978Z

Frame 534 | 2019-05-02T19:47:52.32797Z

💡 CUCM tells phone to open an RTP receive channel with specified codec and packetization; phone responds with OpenReceiveChannelAck containing its IP:port

💡 CUCM tells phone to open an RTP receive channel with specified codec and packetization; phone responds with OpenReceiveChannelAck containing its IP:port

💡 CUCM tells phone to open an RTP receive channel with specified codec and packetization; phone responds with OpenReceiveChannelAck containing its IP:port

💡 CUCM tells phone to open an RTP receive channel with specified codec and packetization; phone responds with OpenReceiveChannelAck containing its IP:port

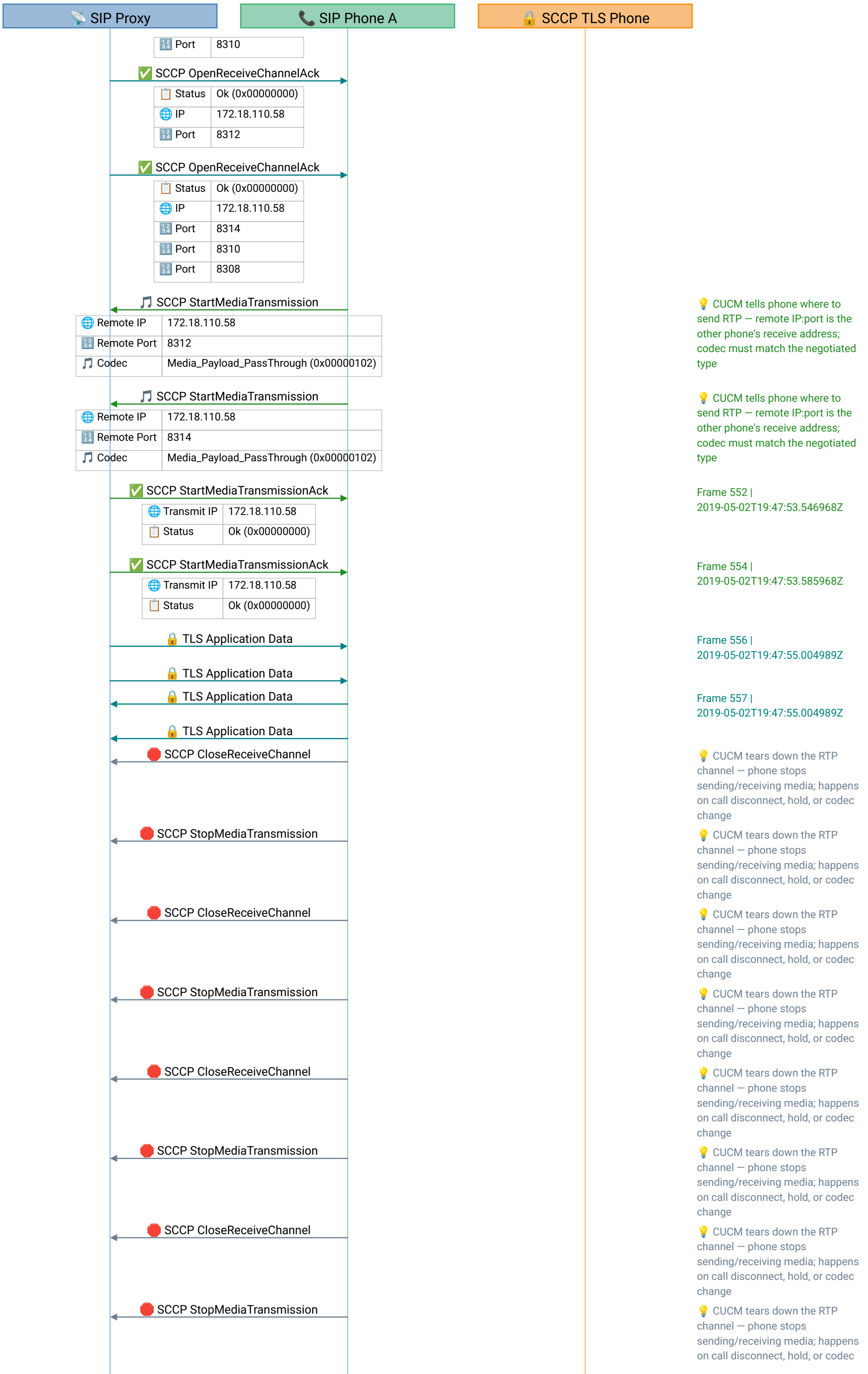
💡 CUCM tells phone to open an RTP receive channel with specified codec and packetization; phone responds with OpenReceiveChannelAck containing its IP:port

💡 CUCM tells phone where to send RTP – remote IP:port is the other phone's receive address; codec must match the negotiated type

💡 CUCM tells phone where to send RTP – remote IP:port is the other phone's receive address; codec must match the negotiated type

Frame 545 | 2019-05-02T19:47:53.504963Z

Frame 548 | 2019-05-02T19:47:53.544969Z



💡 CUCM tells phone where to send RTP – remote IP:port is the other phone's receive address; codec must match the negotiated type

💡 CUCM tells phone where to send RTP – remote IP:port is the other phone's receive address; codec must match the negotiated type

Frame 552 | 2019-05-02T19:47:53.546968Z

Frame 554 | 2019-05-02T19:47:53.585968Z

Frame 556 | 2019-05-02T19:47:55.004989Z

Frame 557 | 2019-05-02T19:47:55.004989Z

💡 CUCM tears down the RTP channel – phone stops sending/receiving media; happens on call disconnect, hold, or codec change

💡 CUCM tears down the RTP channel – phone stops sending/receiving media; happens on call disconnect, hold, or codec change

💡 CUCM tears down the RTP channel – phone stops sending/receiving media; happens on call disconnect, hold, or codec change

💡 CUCM tears down the RTP channel – phone stops sending/receiving media; happens on call disconnect, hold, or codec change

💡 CUCM tears down the RTP channel – phone stops sending/receiving media; happens on call disconnect, hold, or codec change

💡 CUCM tears down the RTP channel – phone stops sending/receiving media; happens on call disconnect, hold, or codec change

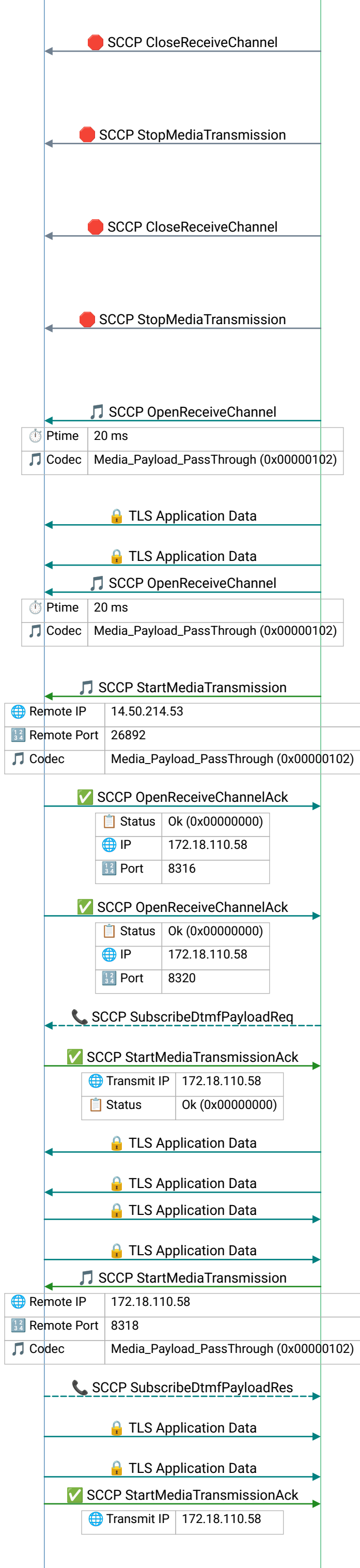
💡 CUCM tears down the RTP channel – phone stops sending/receiving media; happens on call disconnect, hold, or codec change

💡 CUCM tears down the RTP channel – phone stops sending/receiving media; happens on call disconnect, hold, or codec change

SIP Proxy

SIP Phone A

SCCP TLS Phone



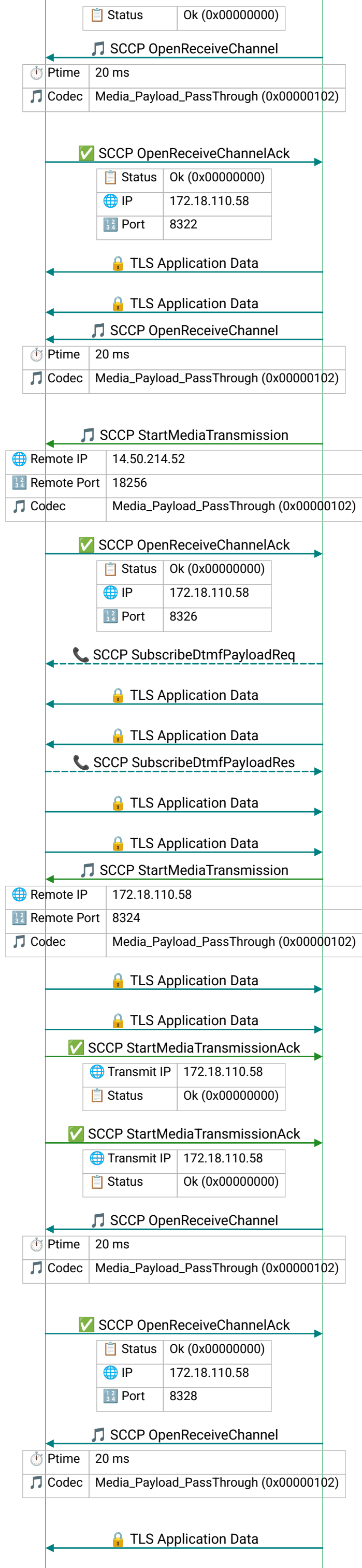
change

- 💡 CUCM tears down the RTP channel – phone stops sending/receiving media; happens on call disconnect, hold, or codec change
- 💡 CUCM tears down the RTP channel – phone stops sending/receiving media; happens on call disconnect, hold, or codec change
- 💡 CUCM tears down the RTP channel – phone stops sending/receiving media; happens on call disconnect, hold, or codec change
- 💡 CUCM tells phone to open an RTP receive channel with specified codec and packetization; phone responds with **OpenReceiveChannelAck** containing its IP:port  
Frame 579 | 2019-05-02T19:48:02.520969Z
- 💡 CUCM tells phone to open an RTP receive channel with specified codec and packetization; phone responds with **OpenReceiveChannelAck** containing its IP:port  
💡 CUCM tells phone where to send RTP – remote IP:port is the other phone's receive address; codec must match the negotiated type  
Frame 583 | 2019-05-02T19:48:02.52196Z
- Frame 585 | 2019-05-02T19:48:02.522967Z
- Frame 587 | 2019-05-02T19:48:02.522967Z
- Frame 588 | 2019-05-02T19:48:02.522967Z
- Frame 589 | 2019-05-02T19:48:02.525958Z
- Frame 591 | 2019-05-02T19:48:02.528964Z
- 💡 CUCM tells phone where to send RTP – remote IP:port is the other phone's receive address; codec must match the negotiated type  
Frame 594 | 2019-05-02T19:48:02.529971Z
- Frame 596 | 2019-05-02T19:48:02.568955Z
- Frame 599 | 2019-05-02T19:48:02.569962Z

SIP Proxy

SIP Phone A

SCCP TLS Phone



💡 CUCM tells phone to open an RTP receive channel with specified codec and packetization; phone responds with OpenReceiveChannelAck containing its IP:port  
Frame 602 | 2019-05-02T19:48:02.696954Z

Frame 603 | 2019-05-02T19:48:02.696954Z

💡 CUCM tells phone to open an RTP receive channel with specified codec and packetization; phone responds with OpenReceiveChannelAck containing its IP:port  
💡 CUCM tells phone where to send RTP – remote IP:port is the other phone's receive address; codec must match the negotiated type

Frame 608 | 2019-05-02T19:48:02.697961Z

Frame 609 | 2019-05-02T19:48:02.697961Z

Frame 610 | 2019-05-02T19:48:02.697961Z

Frame 612 | 2019-05-02T19:48:02.698953Z

Frame 613 | 2019-05-02T19:48:02.718956Z

💡 CUCM tells phone where to send RTP – remote IP:port is the other phone's receive address; codec must match the negotiated type

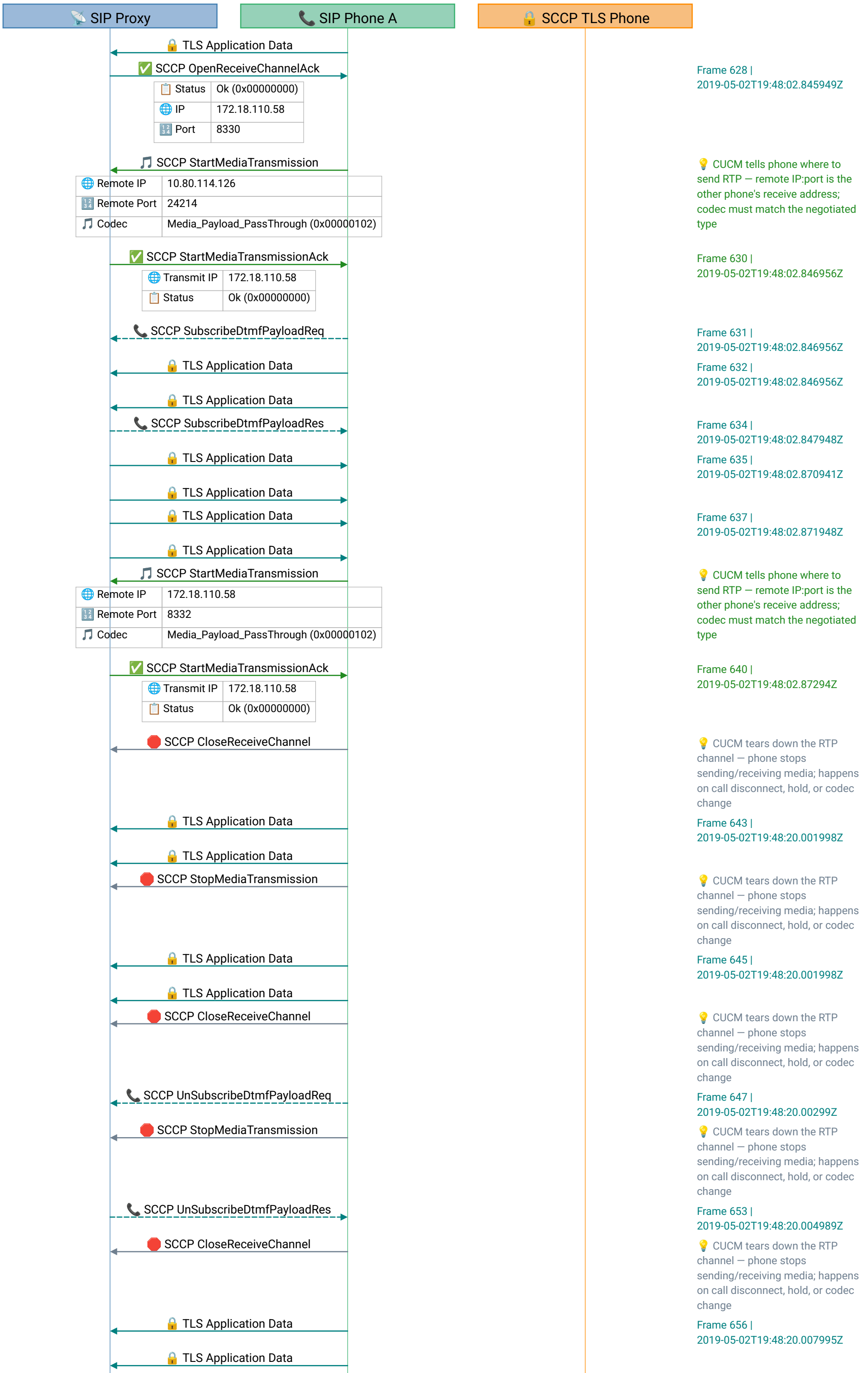
Frame 616 | 2019-05-02T19:48:02.719948Z

Frame 618 | 2019-05-02T19:48:02.719948Z

Frame 620 | 2019-05-02T19:48:02.759955Z

💡 CUCM tells phone to open an RTP receive channel with specified codec and packetization; phone responds with OpenReceiveChannelAck containing its IP:port  
Frame 624 | 2019-05-02T19:48:02.841951Z

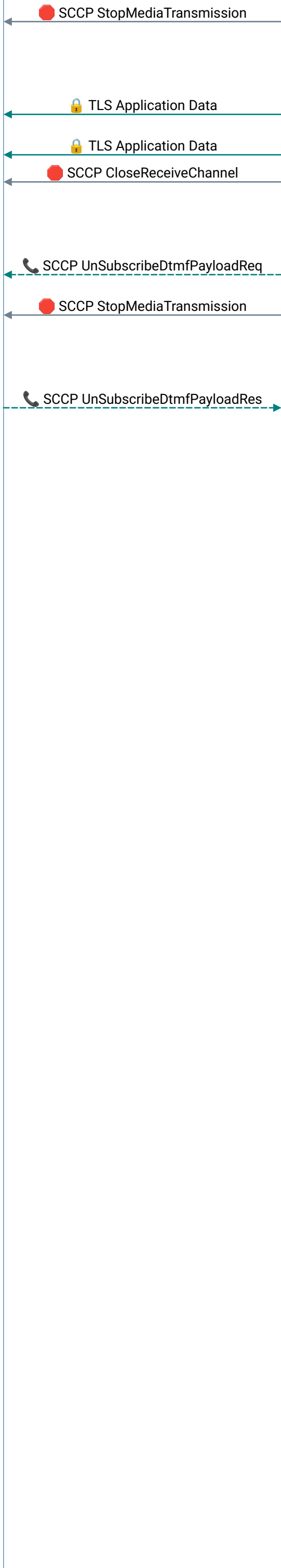
💡 CUCM tells phone to open an RTP receive channel with specified codec and packetization; phone responds with OpenReceiveChannelAck containing its IP:port  
Frame 627 | 2019-05-02T19:48:02.845949Z



SIP Proxy

SIP Phone A

SCCP TLS Phone



💡 CUCM tears down the RTP channel – phone stops sending/receiving media; happens on call disconnect, hold, or codec change

Frame 658 |  
2019-05-02T19:48:20.007995Z

💡 CUCM tears down the RTP channel – phone stops sending/receiving media; happens on call disconnect, hold, or codec change

Frame 660 |  
2019-05-02T19:48:20.007995Z

💡 CUCM tears down the RTP channel – phone stops sending/receiving media; happens on call disconnect, hold, or codec change

Frame 665 |  
2019-05-02T19:48:20.008986Z