

R2 (LISP xTR)

R1 (LISP MS/MR)

R3 (LISP xTR)

lisp_registration.pcapng

LISP Map-Register

Record Count	1
Nonce	0x67ab931f9e8b974a
Record TTL	1440
EID Mask Length	32
Locator	10.0.123.2

Frame 1 |
2020-08-11T13:31:25.55443Z

LISP Map-Register

Record Count	1
Nonce	0x3e3bd1d1f80a12da
Record TTL	1440
EID Mask Length	128
Locator	10.0.123.2

Frame 2 |
2020-08-11T13:31:25.555426Z

LISP Map-Register

Record Count	1
Nonce	0xe70430fca1809623
Record TTL	1440
EID Mask Length	26
Instance ID	100
Locator	10.0.123.2

Frame 3 |
2020-08-11T13:31:25.555426Z

LISP Map-Register

Record Count	1
Nonce	0x56fadc32c8dcc250
Record TTL	1440
EID Mask Length	64
Instance ID	100
Locator	10.0.123.2

Frame 4 |
2020-08-11T13:31:25.555426Z

LISP Map-Notify

Record Count	1
Nonce	0x3e3bd1d1f80a12da
Record TTL	1440
EID Mask Length	128
Locator	10.0.123.2

Frame 5 |
2020-08-11T13:31:25.555426Z

LISP Map-Notify

Record Count	1
Nonce	0x67ab931f9e8b974a
Record TTL	1440
EID Mask Length	32
Locator	10.0.123.2

Frame 6 |
2020-08-11T13:31:25.555426Z

LISP Map-Notify

Record Count	1
Nonce	0xe70430fca1809623
Record TTL	1440
EID Mask Length	26
Instance ID	100
Locator	10.0.123.2

Frame 7 |
2020-08-11T13:31:25.556425Z

LISP Map-Notify

Record Count	1
Nonce	0x56fadc32c8dcc250
Record TTL	1440
EID Mask Length	64
Instance ID	100
Locator	10.0.123.2

Frame 8 |
2020-08-11T13:31:25.560246Z

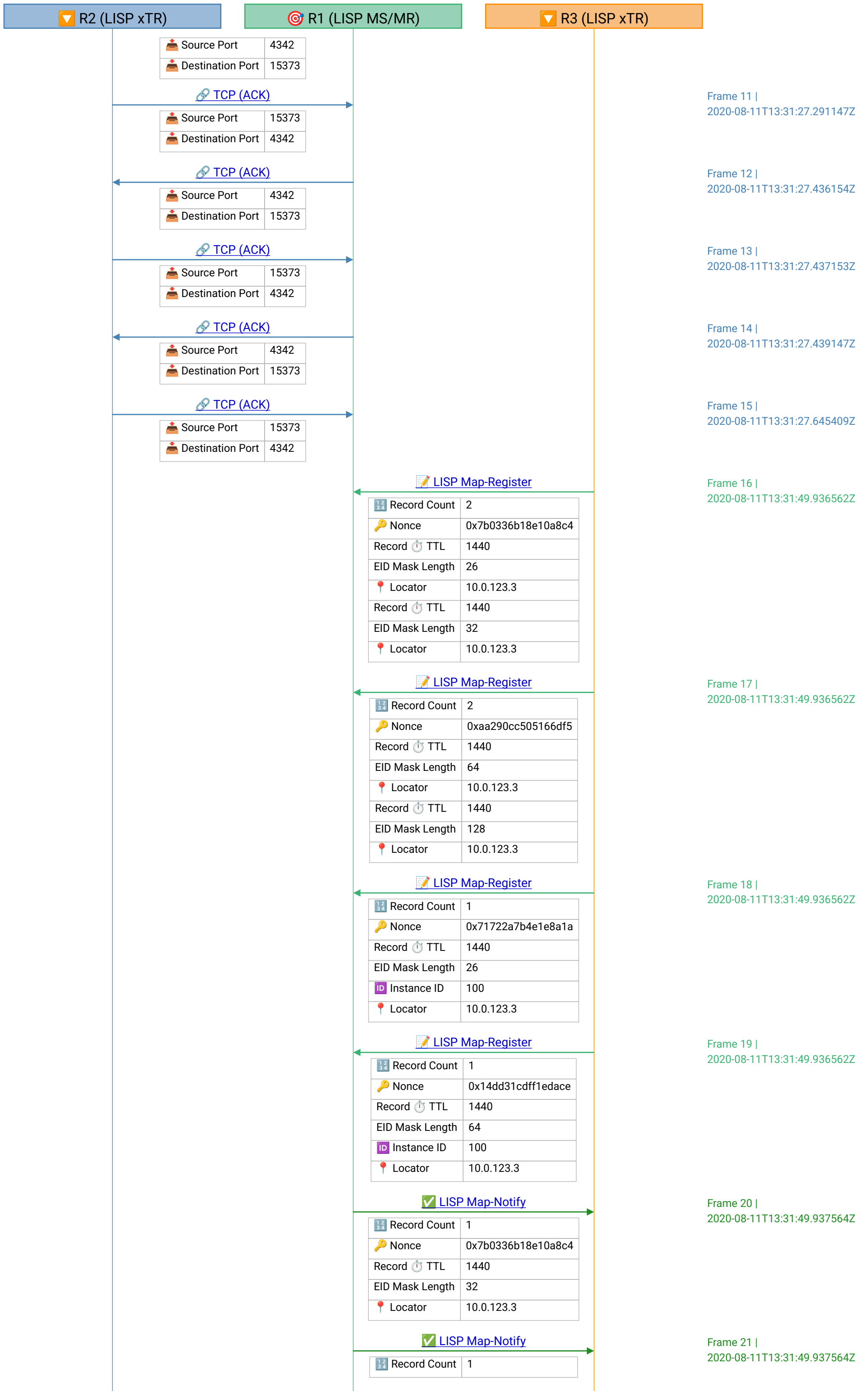
TCP (SYN)

Source Port	15373
Destination Port	4342

Frame 9 |
2020-08-11T13:31:27.28915Z

TCP (SYN, ACK)

Frame 10 |
2020-08-11T13:31:27.290148Z



R2 (LISP xTR)

R1 (LISP MS/MR)

R3 (LISP xTR)

🔑 Nonce	0xaa290cc505166df5
Record ⌚ TTL	1440
EID Mask Length	128
📍 Locator	10.0.123.3

✓ LISP Map-Notify

📄 Record Count	1
🔑 Nonce	0x14dd31cdff1edace
Record ⌚ TTL	1440
EID Mask Length	64
ID Instance ID	100
📍 Locator	10.0.123.3

✓ LISP Map-Notify

📄 Record Count	1
🔑 Nonce	0x71722a7b4e1e8a1a
Record ⌚ TTL	1440
EID Mask Length	26
ID Instance ID	100
📍 Locator	10.0.123.3

🔗 TCP (SYN)

🔥 Source Port	52995
🔥 Destination Port	4342

🔗 TCP (SYN, ACK)

🔥 Source Port	4342
🔥 Destination Port	52995

🔗 TCP (ACK)

🔥 Source Port	52995
🔥 Destination Port	4342

🔗 TCP (ACK)

🔥 Source Port	4342
🔥 Destination Port	52995

🔗 TCP (ACK)

🔥 Source Port	52995
🔥 Destination Port	4342

🔗 TCP (ACK)

🔥 Source Port	4342
🔥 Destination Port	52995

🔗 TCP (ACK)

🔥 Source Port	52995
🔥 Destination Port	4342

Frame 22 | 2020-08-11T13:31:49.943547Z

Frame 23 | 2020-08-11T13:31:49.943547Z

Frame 24 | 2020-08-11T13:31:51.673703Z

Frame 25 | 2020-08-11T13:31:51.674768Z

Frame 26 | 2020-08-11T13:31:51.674768Z

Frame 27 | 2020-08-11T13:31:51.820644Z

Frame 28 | 2020-08-11T13:31:51.821598Z

Frame 29 | 2020-08-11T13:31:51.822587Z

Frame 30 | 2020-08-11T13:31:52.034854Z