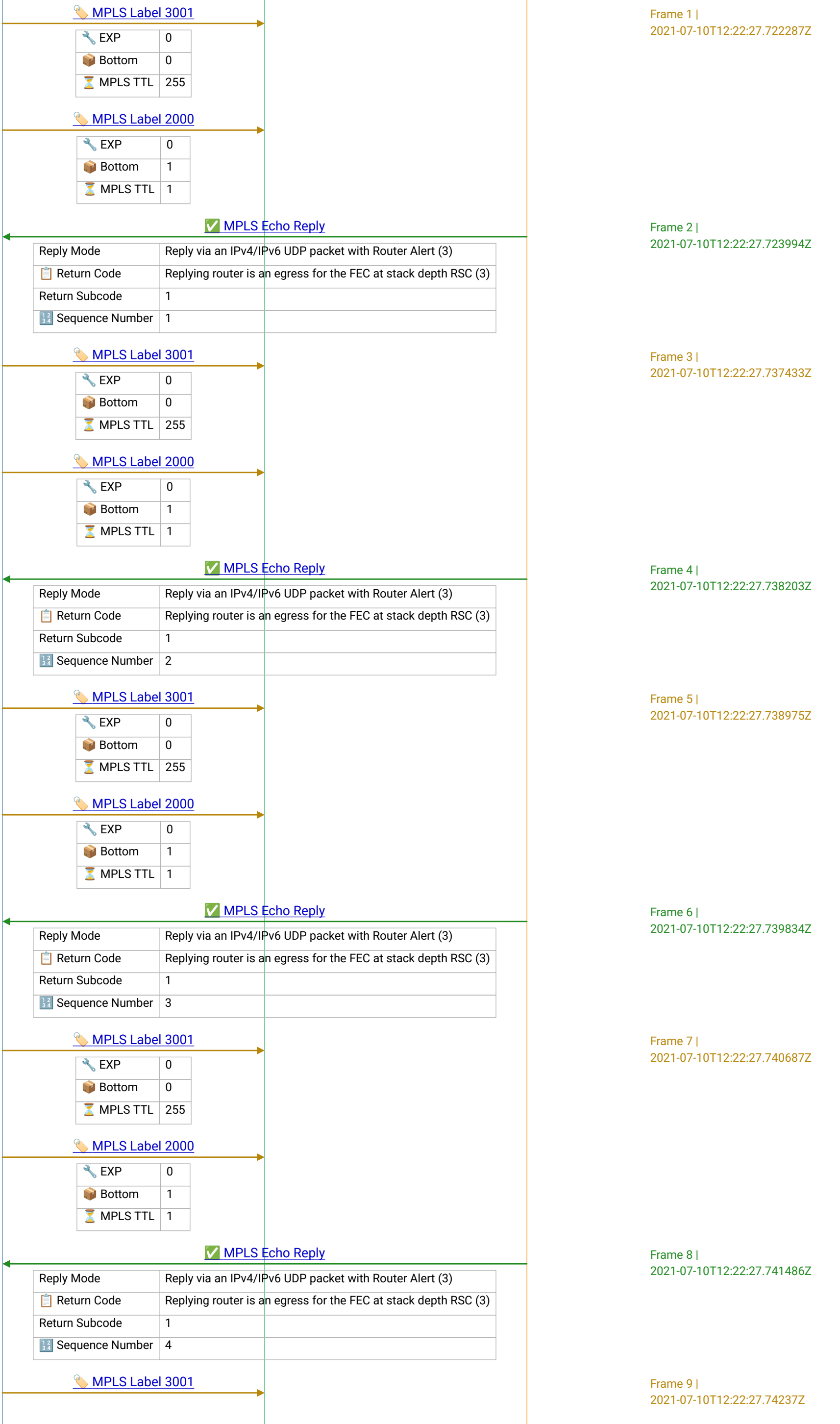


R1 (PE)

LSPV Loopback

R2

Ispv_pwire_router_alert.pcapng



R1 (PE)

LSPV Loopback

R2

EXP	0
Bottom	0
MPLS TTL	255

MPLS Label 2000

EXP	0
Bottom	1
MPLS TTL	1

MPLS Echo Reply

Reply Mode	Reply via an IPv4/IPv6 UDP packet with Router Alert (3)
Return Code	Replying router is an egress for the FEC at stack depth RSC (3)
Return Subcode	1
Sequence Number	5

Frame 10 |
2021-07-10T12:22:27.743628Z