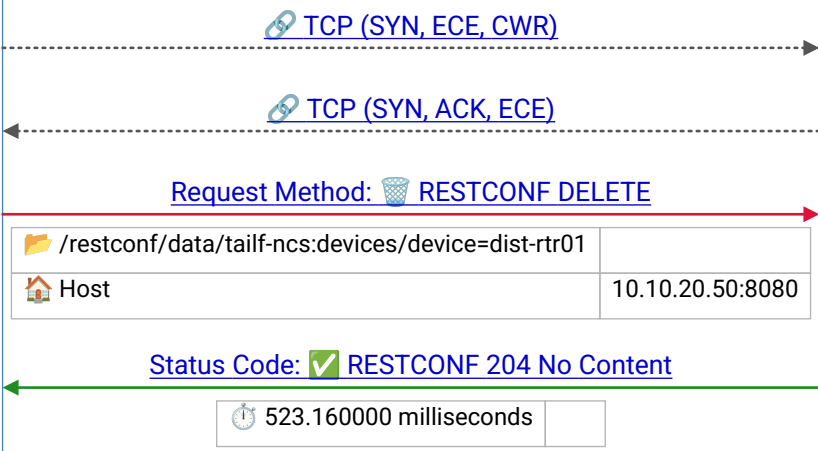


restconf_delete_device.pcapng



Frame 1 |
2020-09-22T12:00:40.172537Z

Frame 2 |
2020-09-22T12:00:40.252935Z

RESTCONF DELETE = NETCONF edit-config delete – removes the resource at the URI; 204 No Content on success; fails if resource has dependents

204 No Content – operation succeeded with no response body; typical for PUT/PATCH/DELETE confirming the YANG data was modified