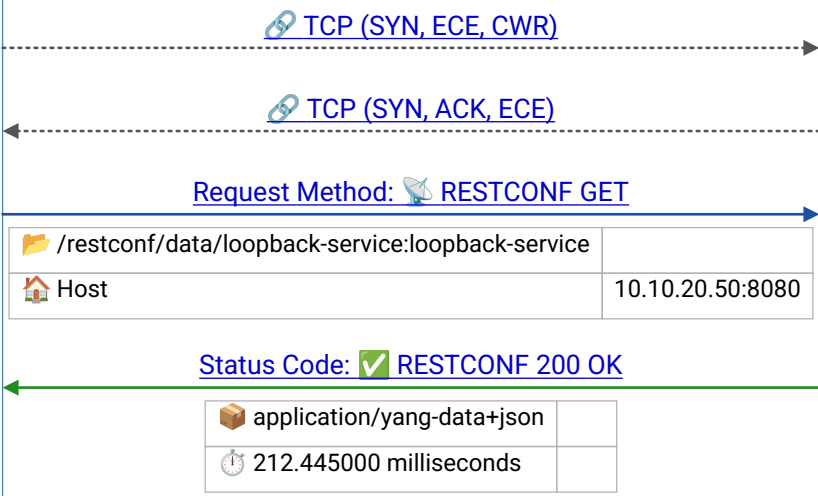


Postman (RESTCONF Client)

Cisco NSO (RESTCONF Server)

restconf_get_service_lb.pcapng



Frame 1 |
2020-09-22T12:17:14.422444Z

Frame 2 |
2020-09-22T12:17:14.502736Z

💡 RESTCONF GET = NETCONF get-config – retrieves YANG model data at the specified path; response is JSON-encoded (yang-data+json)

💡 200 OK – server returns the requested YANG data as JSON; for large responses, Transfer-Encoding: chunked is used