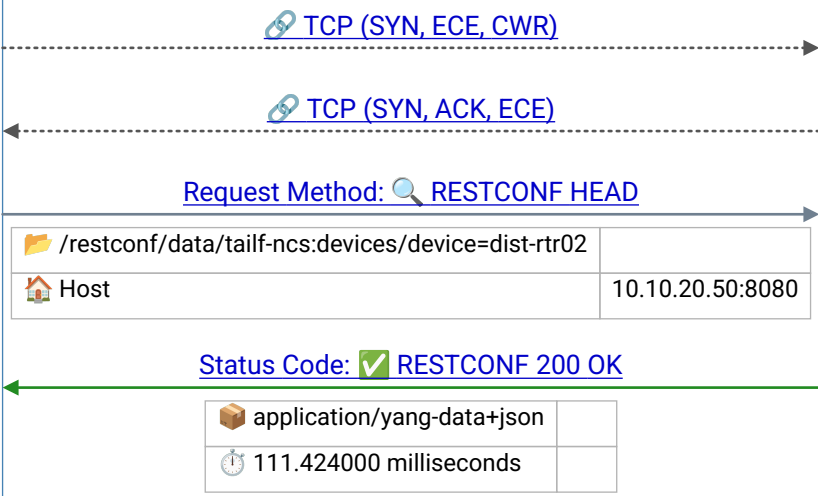


restconf_head_device.pcapng



Frame 1 |
2020-09-22T12:08:09.943237Z

Frame 2 |
2020-09-22T12:08:10.09273Z

💡 RESTCONF HEAD – same as GET but returns headers only (no body); used to check if a resource exists and get metadata without transferring data

💡 200 OK – server returns the requested YANG data as JSON; for large responses, Transfer-Encoding: chunked is used