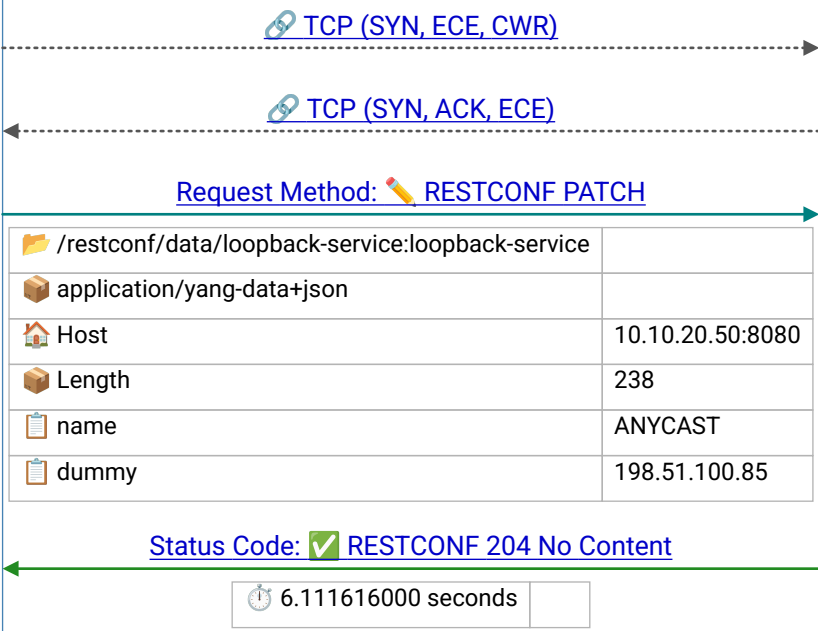


restconf_patch_service_add.pcapng



Frame 1 |
2020-09-22T12:14:24.112719Z

Frame 2 |
2020-09-22T12:14:24.195046Z

RESTCONF PATCH = NETCONF edit-config merge – merges partial changes into existing resource; only specified fields are updated; 204 on success

204 No Content – operation succeeded with no response body; typical for PUT/PATCH/DELETE confirming the YANG data was modified