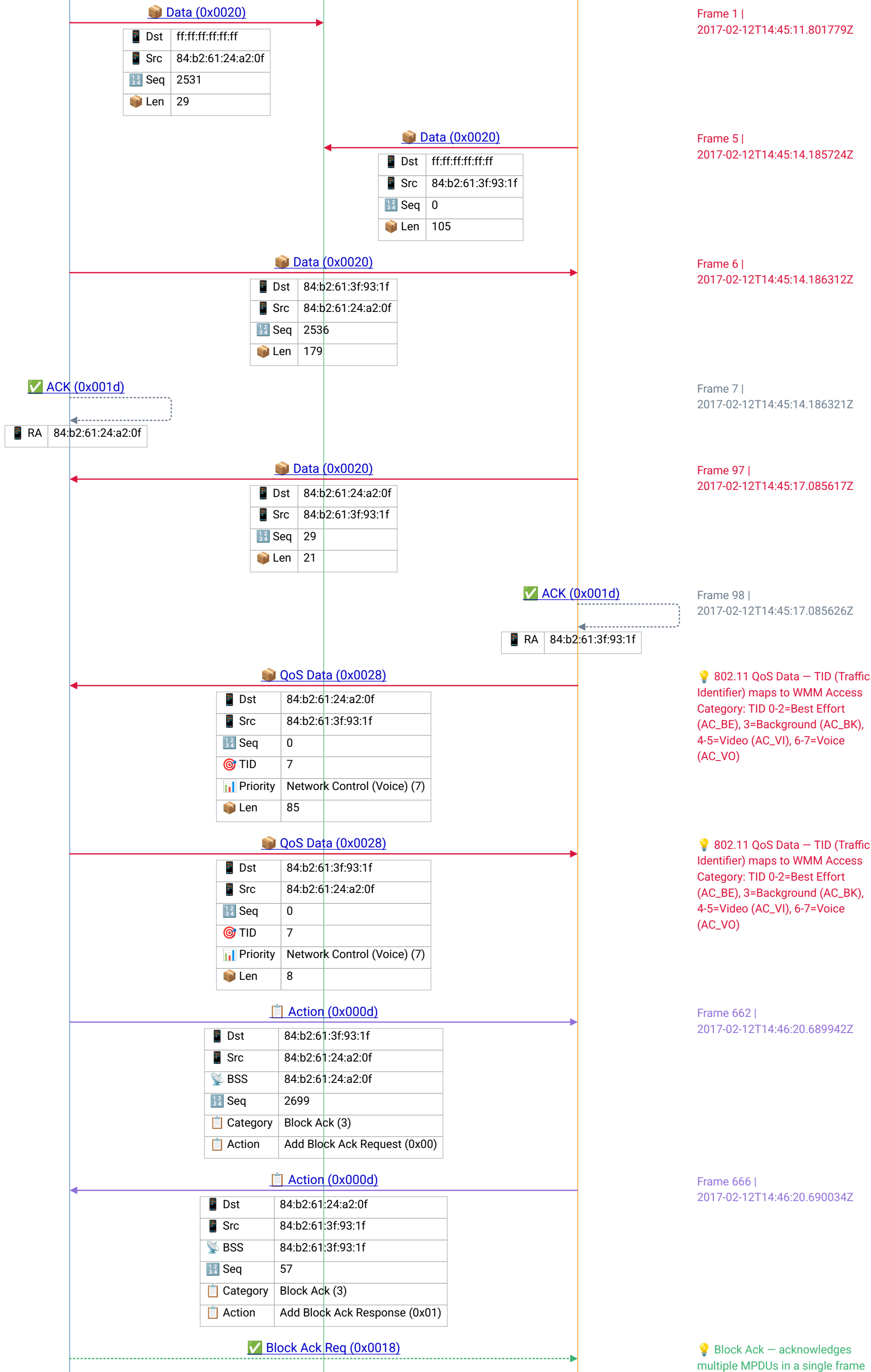


Cisco AP 1x

Broadcast

Cisco AP 2b

mesh_mapjoin_wlan.pcapng



💡 802.11 QoS Data – TID (Traffic Identifier) maps to WMM Access Category: TID 0-2=Best Effort (AC_BE), 3=Background (AC_BK), 4-5=Video (AC_VI), 6-7=Voice (AC_VO)

💡 802.11 QoS Data – TID (Traffic Identifier) maps to WMM Access Category: TID 0-2=Best Effort (AC_BE), 3=Background (AC_BK), 4-5=Video (AC_VI), 6-7=Voice (AC_VO)

💡 Block Ack – acknowledges multiple MPDUs in a single frame

Cisco AP 1x

Broadcast

Cisco AP 2b

| | |
|--------|------------------------------------|
| Policy | Immediate Acknowledgement Required |
| Type | Compressed BlockAck |

Block Ack (0x0019)

| | |
|----------|------------------------------------|
| Policy | Immediate Acknowledgement Required |
| Type | Compressed BlockAck |
| Bitmap | 0000000000000000 |
| Last ACK | 16 |

Action (0x000d)

| | |
|----------|------------------------------|
| Dst | 84:b2:61:24:a2:0f |
| Src | 84:b2:61:3f:93:1f |
| BSS | 84:b2:61:3f:93:1f |
| Seq | 87 |
| Category | Block Ack (3) |
| Action | Add Block Ack Request (0x00) |

Action (0x000d)

| | |
|----------|-------------------------------|
| Dst | 84:b2:61:3f:93:1f |
| Src | 84:b2:61:24:a2:0f |
| BSS | 84:b2:61:24:a2:0f |
| Seq | 2725 |
| Category | Block Ack (3) |
| Action | Add Block Ack Response (0x01) |

Block Ack Req (0x0018)

| | |
|--------|------------------------------------|
| Policy | Immediate Acknowledgement Required |
| Type | Compressed BlockAck |

Block Ack (0x0019)

| | |
|----------|------------------------------------|
| Policy | Immediate Acknowledgement Required |
| Type | Compressed BlockAck |
| Bitmap | 0000000000000000 |
| Last ACK | 15 |

(A-MPDU aggregation); bitmap indicates which sequence numbers were received; improves throughput by reducing per-frame ACK overhead

Block Ack – acknowledges multiple MPDUs in a single frame (A-MPDU aggregation); bitmap indicates which sequence numbers were received; improves throughput by reducing per-frame ACK overhead

Frame 883 | 2017-02-12T14:46:33.082085Z

Frame 887 | 2017-02-12T14:46:33.082157Z

Block Ack – acknowledges multiple MPDUs in a single frame (A-MPDU aggregation); bitmap indicates which sequence numbers were received; improves throughput by reducing per-frame ACK overhead

Block Ack – acknowledges multiple MPDUs in a single frame (A-MPDU aggregation); bitmap indicates which sequence numbers were received; improves throughput by reducing per-frame ACK overhead