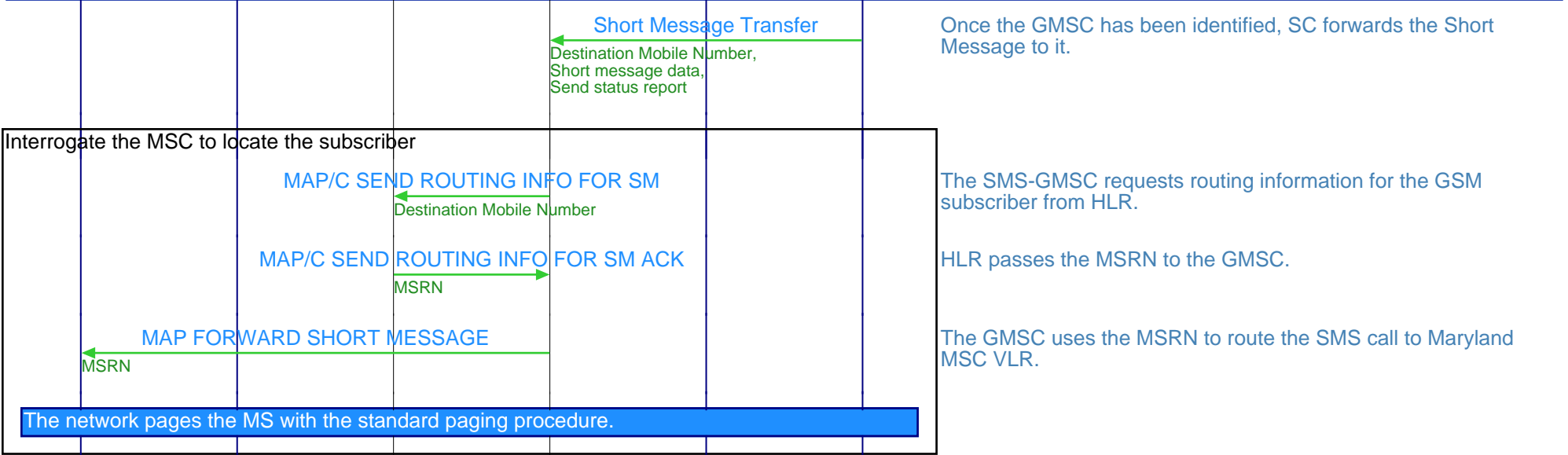


SMS-GMSC Interfaces (GSM Mobile Terminated GSM)					
Mobile Network					EventStudio System Designer 6
NSS					
Mobile Switching Center		HLR	SMS-GMSC	Service Center	
MSC	SM-RL-MSC	HLR	SMS-GMSC	SM-TL-SC	SC
21-Jan-14 16:59 (Page 1)					

In this call flow we will look at how a terminating SMS is handled in GSM. Setting up a terminating SMS session is a multi-step process.

- (1) Interrogate the MSC to locate the subscriber
- (2) Setting SMS session setup and acquiring radio resources
- (3) Sending the SMS.
- (4) Releasing the session and associated radio resources.

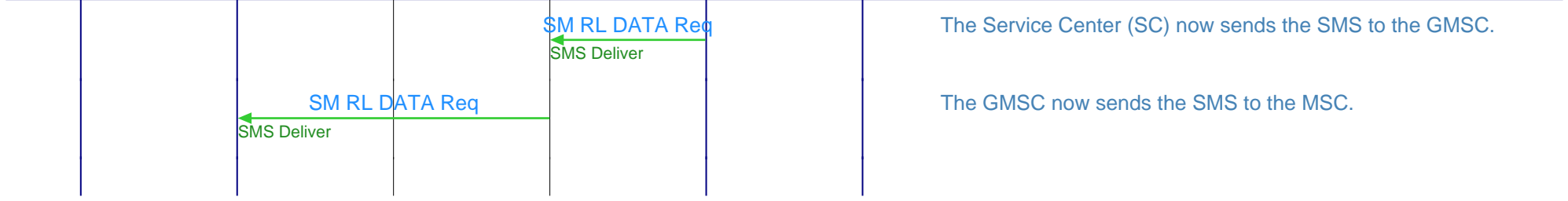


Begin RR Connection Establishment

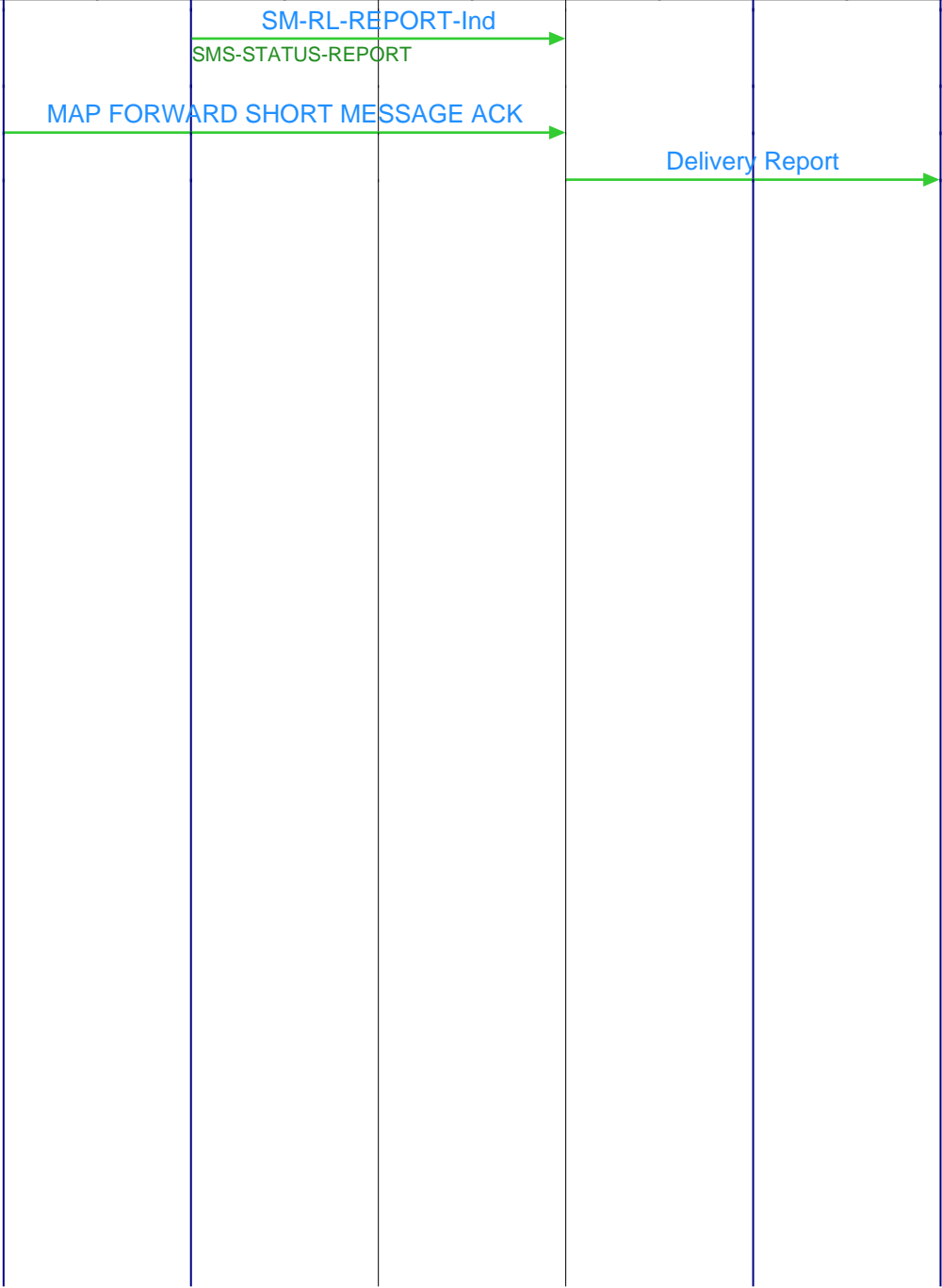
LEG: Initiate Authentication Procedure

Enable Ciphering

SMS sent from SC to Mobile



SMS-GMSC Interfaces (GSM Mobile Terminated GSM)						
Mobile Network					EventStudio System Designer 6	
NSS						
Mobile Switching Center		HLR	SMS-GMSC	Service Center		
MSC	SM-RL-MSC	HLR	SMS-GMSC	SM-TL-SC	SC	
21-Jan-14 16:59 (Page 2)						



This message signals to the GMSC that the SMS has been delivered to the terminating mobile.

The SMS Delivery report is now forwarded to the SC.